

Caspase 3 antibody [CPP32 4-1-18]

Cat. No. GTX30246

Host	Mouse
Clonality	Monoclonal
Isotype	IgG2a
Application	WB, IHC-P
Reactivity	Human, Mouse, Rat

Reference (4)
Package
200 µl

APPLICATION

Application Note

*Optimal dilutions/concentrations should be determined by the researcher.

Suggested dilution	Recommended dilution
WB	1:500 - 1:1000
IHC-P	1:200 - 1:500

Not tested in other applications.

Calculated MW 32 kDa. ([Note](#))

PROPERTIES

Form	Liquid
Buffer	PBS
Preservative	0.02% Sodium azide
Storage	Store as concentrated solution. Centrifuge briefly prior to opening vial. For short-term storage (1-2 weeks), store at 4°C. For long-term storage, aliquot and store at -20°C or below. Avoid multiple freeze-thaw cycles.
Concentration	1 mg/ml (Please refer to the vial label for the specific concentration.)
Immunogen	Full-length recombinant human Caspase 3 [UniProt# P42574]
Purification	Protein G purified
Conjugation	Unconjugated

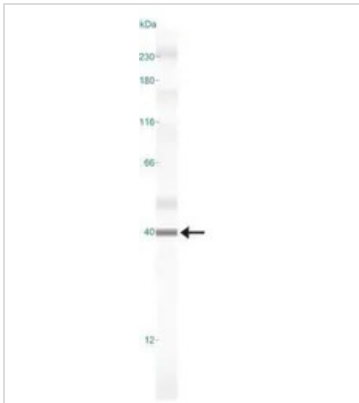
Note

For laboratory research use only. Not for any clinical, therapeutic, or diagnostic use in humans or animals. Not for animal or human consumption.

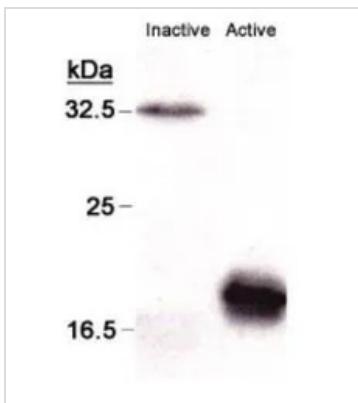
Purchasers shall not, and agree not to enable third parties to, analyze, copy, reverse engineer or otherwise attempt to determine the structure or sequence of the product.



For full product information, images and publications, please visit our [website](#).

DATA IMAGES

GTX30246 WB Image

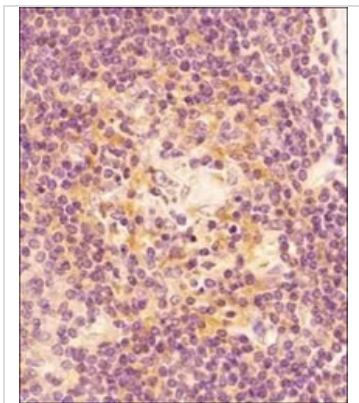
WB analysis of HEK293 cell lysate using GTX30246 Caspase 3 antibody [CPP32 4-1-18].


GTX30246 WB Image

WB analysis of HEK293 cell lysate using GTX30246 Caspase 3 antibody [CPP32 4-1-18].

Lanes 1 : inactive Caspase

Lane 2 : active Caspase


GTX30246 IHC-P Image

IHC-P analysis of human spleen tissue using GTX30246 Caspase 3 antibody [CPP32 4-1-18].

Dilution : 1:200



For full product information, images and publications, please visit our [website](https://www.genetex.com).