

RFXANK antibody

Cat. No. GTX30257

Host	Rabbit
Clonality	Polyclonal
Isotype	IgG
Applications	WB, ELISA
Reactivity	Human, Primate

Package
100 µg

Applications

Application Note

*Optimal dilutions/concentrations should be determined by the researcher.

Suggested dilution	Recommended dilution
WB	Assay dependent
ELISA	Assay dependent

Not tested in other applications.

Calculated MW 28 kDa. ([Note](#))

Product Note Reacts with residues 18-31 [ASELGDPEDPGEEAC] of the RFX-B protein.

Properties

Form	Liquid
Buffer	PBS
Preservative	0.02% Sodium azide
Storage	Store as concentrated solution. Centrifuge briefly prior to opening vial. For short-term storage (1-2 weeks), store at 4°C. For long-term storage, aliquot and store at -20°C or below. Avoid multiple freeze-thaw cycles.
Concentration	1 mg/ml (Please refer to the vial label for the specific concentration.)
Immunogen	Peptide made to a portion of the RFX-B protein.
Purification	Purified IgG
Conjugation	Unconjugated

Note

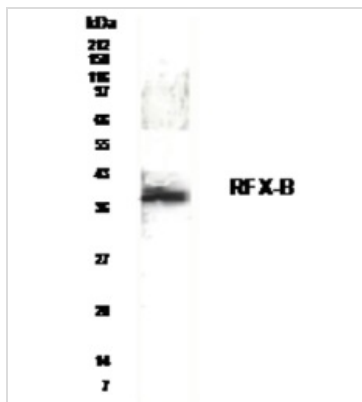
For laboratory research use only. Not for any clinical, therapeutic, or diagnostic use in humans or animals. Not for animal or human consumption.

Purchasers shall not, and agree not to enable third parties to, analyze, copy, reverse engineer or otherwise attempt to determine the structure or sequence of the product.



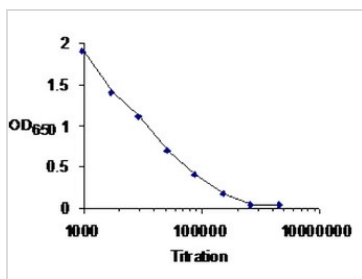
For full product information, images and publications, please visit our [website](#).

DATA IMAGES



GTX30257 WB Image

Western blot analysis of RFX-B in Raji lymphoblastoid cell line with anti-RFX-B at 1:500 dilution.



GTX30257 ELISA Image

Detection of RFX-B using GTX30257 as the capture antibody in ELISA



For full product information, images and publications, please visit our [website](https://www.genetex.com).