

GFP antibody

Cat. No. GTX30266

Host	Rabbit
Clonality	Polyclonal
Isotype	IgG
Applications	WB, IHC-Fr, IP
Reactivity	Species independent

References (1)

Package

100 µg

Applications

Application Note

For IP: Use at a dilution of 1:200-1:500. For WB: Use at a dilution of 1:5,000. Optimal dilutions/concentrations should be determined by the researcher.

Product Note This antibody reacts with wild-type GFP, and its variants, such as EGFP, EBFP.

Properties

Form	Liquid
Buffer	PBS
Preservative	0.1% Sodium azide
Storage	Store as concentrated solution. Centrifuge briefly prior to opening vial. For short-term storage (1-2 weeks), store at 4°C. For long-term storage, aliquot and store at -20°C or below. Avoid multiple freeze-thaw cycles.
Concentration	1 mg/ml (Please refer to the vial label for the specific concentration.)
Immunogen	Purified protein - native GFP <i>Aequorea victoria</i>
Purification	Protein A purified
Conjugation	Unconjugated

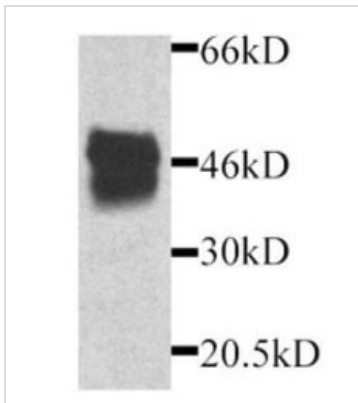
Note For laboratory research use only. Not for any clinical, therapeutic, or diagnostic use in humans or animals. Not for animal or human consumption.

Purchasers shall not, and agree not to enable third parties to, analyze, copy, reverse engineer or otherwise attempt to determine the structure or sequence of the product.



For full product information, images and publications, please visit our [website](#).

DATA IMAGES

**GTX30266 WB Image**

Western blot detection of GFP-MIP2 fusion protein in transfectant by anti-GFP.



For full product information, images and publications, please visit our [website](#).