

# Mre11 antibody

**Cat. No. GTX30294**

<b>Host</b>	Rabbit
<b>Clonality</b>	Polyclonal
<b>Isotype</b>	IgG
<b>Application</b>	WB, ICC/IF, IHC-P, IHC-Fr, FACS, IP, ChIP assay
<b>Reactivity</b>	Human, Mouse, Rat, Hamster, Chicken

Reference ( 8 )  
Package  
50 µl

## APPLICATION

### Application Note

\*Optimal dilutions/concentrations should be determined by the researcher.

Suggested dilution	Recommended dilution
WB	1:5000
ICC/IF	1:200
IHC-P	1:10 - 1:500
IHC-Fr	Assay dependent
FACS	Assay dependent
IP	3 ul
ChIP assay	Assay dependent

Not tested in other applications.

**Calculated MW** 81 kDa. ( [Note](#) )

## PROPERTIES

<b>Form</b>	Liquid
<b>Buffer</b>	Serum
<b>Preservative</b>	0.02% Sodium azide
<b>Storage</b>	Store as concentrated solution. Centrifuge briefly prior to opening vial. For short-term storage (1-2 weeks), store at 4°C. For long-term storage, aliquot and store at -20°C or below. Avoid multiple freeze-thaw cycles.
<b>Immunogen</b>	Full length human Mre11 protein. [UniProt# P49959]
<b>Purification</b>	Unpurified
<b>Conjugation</b>	Unconjugated



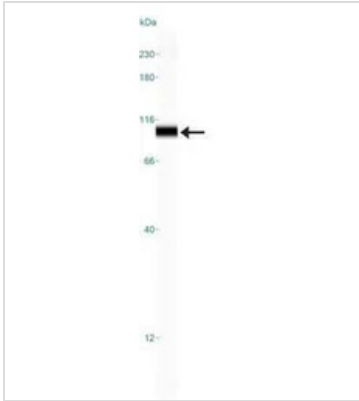
For full product information, images and publications, please visit our [website](#).

For laboratory research use only. Not for any clinical, therapeutic, or diagnostic use in humans or animals. Not for animal or human consumption.

## Note

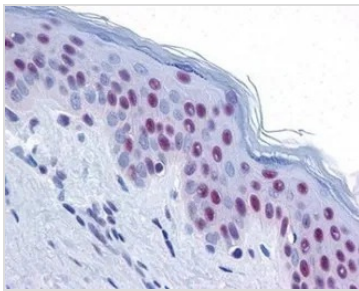
Purchasers shall not, and agree not to enable third parties to, analyze, copy, reverse engineer or otherwise attempt to determine the structure or sequence of the product.

## DATA IMAGES



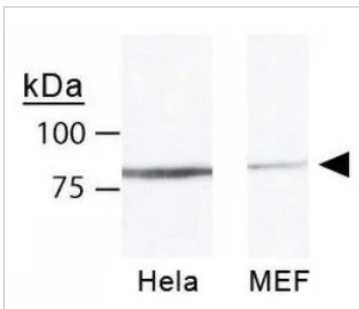
### GTx30294 WB Image

WB analysis of HeLa cell lysate using GTx30294 Mre11 antibody.



### GTx30294 IHC-P Image

IHC-P analysis of human epidermis tissue cross section using GTx30294 Mre11 antibody.



### GTx30294 WB Image

WB analysis of HeLa and MEF cell lysate using GTx30294 Mre11 antibody.



For full product information, images and publications, please visit our [website](https://www.genetex.com).