

DNMT3A antibody

Cat. No. GTX30365

Host	Rabbit
Clonality	Polyclonal
Isotype	IgG
Applications	WB, ICC/IF, IHC-P, IP
Reactivity	Human, Mouse

References (3)

Package

100 µl

Applications

Application Note

*Optimal dilutions/concentrations should be determined by the researcher.

Suggested dilution	Recommended dilution
WB	1:1000
ICC/IF	1:500
IHC-P	1:200
IP	1:10 - 1:500

Not tested in other applications.

Calculated MW 102 kDa. ([Note](#))

Properties

Form	Liquid
Buffer	Serum
Preservative	0.1% Sodium azide
Storage	Store as concentrated solution. Centrifuge briefly prior to opening vial. For short-term storage (1-2 weeks), store at 4°C. For long-term storage, aliquot and store at -20°C or below. Avoid multiple freeze-thaw cycles.
Immunogen	Amino acids 10-118 of human Dnmt3a [UniProt# Q9Y6K1]
Purification	Unpurified
Conjugation	Unconjugated

Note

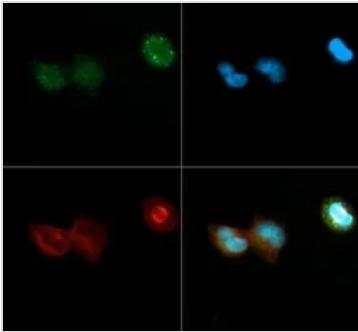
For laboratory research use only. Not for any clinical, therapeutic, or diagnostic use in humans or animals. Not for animal or human consumption.

Purchasers shall not, and agree not to enable third parties to, analyze, copy, reverse engineer or otherwise attempt to determine the structure or sequence of the product.



For full product information, images and publications, please visit our [website](#).

DATA IMAGES



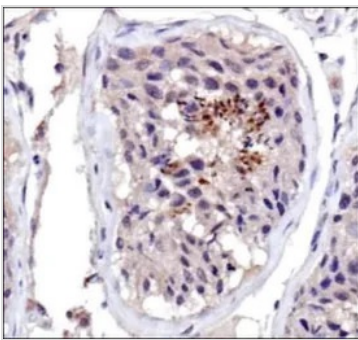
GTx30365 ICC/IF Image

ICC/IF analysis of NTERA-2 cells using GTx30365 DNMT3A antibody.

Green : primary antibody

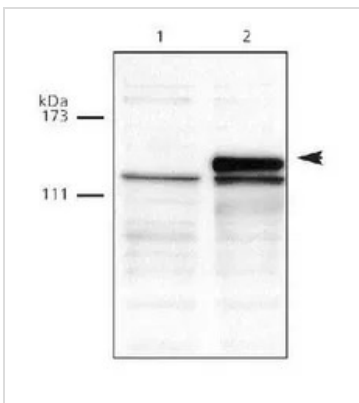
Red : beta-Tubulin

Blue : DAPI



GTx30365 IHC-P Image

IHC-P analysis of human testis tissue using GTx30365 DNMT3A antibody.



GTx30365 WB Image

WB analysis of HCT116 mock (Lane 1) or overexpressing DNMT3A (Lane 2) nuclear extracts using GTx30365 DNMT3A antibody.

Loading : 40μg



For full product information, images and publications, please visit our [website](https://www.genetex.com).