

# NF-M antibody

**Cat. No. GTX30441**

<b>Host</b>	Rabbit
<b>Clonality</b>	Polyclonal
<b>Isotype</b>	IgG
<b>Applications</b>	WB, ICC/IF, IHC-P, IHC-Fr
<b>Reactivity</b>	Human, Mouse, Rat, Bovine, Cat, Pig, Avian

**Package**

50 µl

## Applications

### Application Note

\*Optimal dilutions/concentrations should be determined by the researcher.

Suggested dilution	Recommended dilution
WB	1:5000 - 1:10000
ICC/IF	1:500 - 1:1000
IHC-P	1:1000 - 1:5000
IHC-Fr	1:1000 - 1:5000

Not tested in other applications.

**Calculated MW** 96 kDa. ( [Note](#) )

**Product Note** Specifically recognizes the evolutionarily conserved extreme C-terminal region of Neurofilament Medium (~145-170kDa).

## Properties

<b>Form</b>	Liquid
<b>Buffer</b>	Serum
<b>Preservative</b>	No preservatives
<b>Storage</b>	Store as concentrated solution. Centrifuge briefly prior to opening vial. For short-term storage (1-2 weeks), store at 4°C. For long-term storage, aliquot and store at -20°C or below. Avoid multiple freeze-thaw cycles.
<b>Immunogen</b>	Recombinant rat Neurofilament Medium fusion protein corresponding to the C-terminus [UniProt# P12839]
<b>Purification</b>	Unpurified
<b>Conjugation</b>	Unconjugated

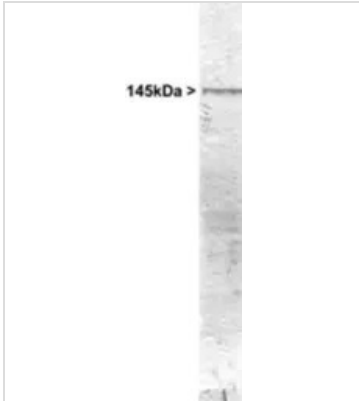
### Note

For laboratory research use only. Not for any clinical, therapeutic, or diagnostic use in humans or animals. Not for animal or human consumption.

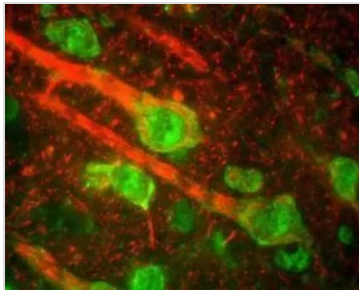
Purchasers shall not, and agree not to enable third parties to, analyze, copy, reverse engineer or otherwise attempt to determine the structure or sequence of the product.



For full product information, images and publications, please visit our [website](#).

**DATA IMAGES**

**GTX30441 WB Image**

WB analysis of rat cerebellum tissue using GTX30441 NF-M antibody.

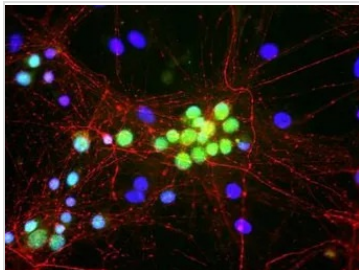

**GTX30441 IHC-Fr Image**

IHC-Fr analysis of rat cerebral cortex tissue using GTX30441 NF-M antibody. This immunostaining reveals the perikarya of pyramidal neurons and dendrites as well as axons surrounding the neurons.

Red : primary antibody

Green : beta-adrenergic receptor kinase 1

Dilution : 1:5000


**GTX30441 ICC/IF Image**

ICC/IF analysis of mixed neuron/glia cell cultures using GTX30441 NF-M antibody.

Red : NF-M antibody

Green : Fox1 antibody

Blue : DAPI



For full product information, images and publications, please visit our [website](#).