

Neurokinin B antibody

Cat. No. GTX30464

Host	Rabbit
Clonality	Polyclonal
Isotype	IgG
Applications	WB, IHC-P, IHC-Fr, IHC
Reactivity	Human, Mouse, Rat

Package
100 µl

Applications

Application Note

*Optimal dilutions/concentrations should be determined by the researcher.

Suggested dilution	Recommended dilution
WB	1:100 - 1:2000
IHC-P	1:100 - 1:1000
IHC-Fr	1:500 - 1:1000
IHC	1:100 - 1:1000

Not tested in other applications.

Calculated MW 13 kDa. ([Note](#))

Properties

Form	Liquid
Buffer	PBS
Preservative	0.02% Sodium azide
Storage	Store as concentrated solution. Centrifuge briefly prior to opening vial. For short-term storage (1-2 weeks), store at 4°C. For long-term storage, aliquot and store at -20°C or below. Avoid multiple freeze-thaw cycles.
Concentration	1 mg/ml (Please refer to the vial label for the specific concentration.)
Immunogen	A synthetic peptide made to an internal sequence of mouse proNeurokinin B (~93% homology to the rat sequence). [UniProt# P55099]
Purification	Purified by antigen-affinity chromatography
Conjugation	Unconjugated

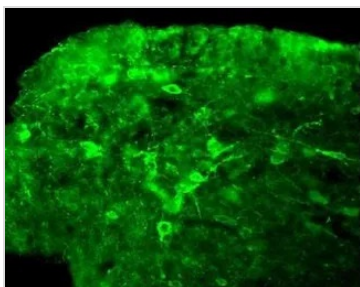


For full product information, images and publications, please visit our [website](#).

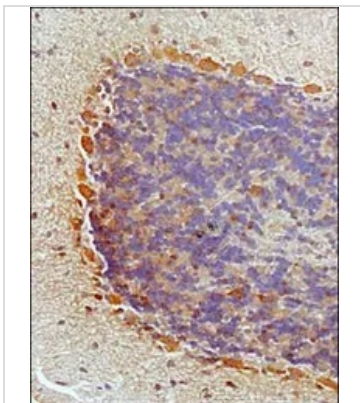
For laboratory research use only. Not for any clinical, therapeutic, or diagnostic use in humans or animals. Not for animal or human consumption.

Note

Purchasers shall not, and agree not to enable third parties to, analyze, copy, reverse engineer or otherwise attempt to determine the structure or sequence of the product.

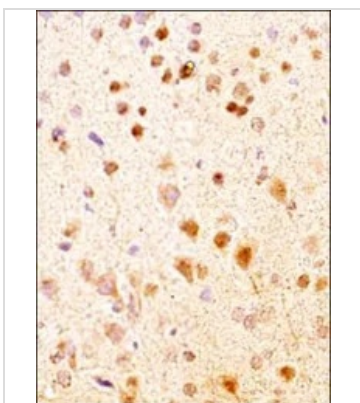
DATA IMAGES

GTX30464 IHC Image

IHC analysis of rat brain tissue using GTX30464 Neurokinin B antibody.


GTX30464 IHC-P Image

IHC-P analysis of mouse brain tissue using GTX30464 Neurokinin B antibody.

Dilution : 1:100


GTX30464 IHC-P Image

IHC-P analysis of mouse brain tissue using GTX30464 Neurokinin B antibody.

Dilution : 1:200



For full product information, images and publications, please visit our [website](https://www.genetex.com).