

STEP / PTPN5 antibody [23E5]

Cat. No. GTX30465

Host	Mouse
Clonality	Monoclonal
Isotype	IgG1
Applications	WB, ICC/IF, IHC-Fr, IP, IHC
Reactivity	Human, Mouse, Rat

Package
100 µl

Applications

Application Note

*Optimal dilutions/concentrations should be determined by the researcher.

Suggested dilution	Recommended dilution
WB	1:1000 - 1:2000
ICC/IF	1:100 - 1:500
IHC-Fr	1:100 - 1:500
IP	1:50
IHC	1:100 - 1:500

Not tested in other applications.

Product Note This antibody is specific for STEP61, STEP46, STEP38, and STEP20.

Properties

Form	Liquid
Buffer	Ascites
Preservative	0.09% Sodium azide
Storage	Store as concentrated solution. Centrifuge briefly prior to opening vial. For short-term storage (1-2 weeks), store at 4°C. For long-term storage, aliquot and store at -20°C or below. Avoid multiple freeze-thaw cycles.
Immunogen	A synthetic peptide of rat STEP46 (amino acids 57-74: MCTPGCNEEGFGYLVSPR)
Purification	Unpurified
Conjugation	Unconjugated

Note

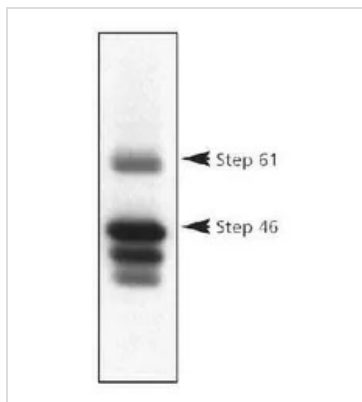
For laboratory research use only. Not for any clinical, therapeutic, or diagnostic use in humans or animals. Not for animal or human consumption.

Purchasers shall not, and agree not to enable third parties to, analyze, copy, reverse engineer or otherwise attempt to determine the structure or sequence of the product.



For full product information, images and publications, please visit our [website](#).

DATA IMAGES



GTX30465 WB Image

WB analysis of rat striatal protein homogenates using GTX30465 STEP antibody [23E5].



For full product information, images and publications, please visit our [website](#).