

SR-BI antibody

Cat. No. GTX30467

Host	Rabbit
Clonality	Polyclonal
Isotype	IgG
Application	WB, ICC/IF, IHC-P, IHC-Fr, FACS, IP, Neutralizing/Inhibition
Reactivity	Human, Mouse, Rat

Reference (1)

Package

100 µl

APPLICATION

Application Note

*Optimal dilutions/concentrations should be determined by the researcher.

Suggested dilution	Recommended dilution
WB	1:500
ICC/IF	1:50 - 1:200
IHC-P	1:100
IHC-Fr	Assay dependent
FACS	Assay dependent
IP	1:100
Neutralizing/Inhibition	1:500 - 1000

Not tested in other applications.

PROPERTIES

Form	Liquid
Buffer	Serum
Preservative	0.05% Sodium azide
Storage	Store as concentrated solution. Centrifuge briefly prior to opening vial. For short-term storage (1-2 weeks), store at 4°C. For long-term storage, aliquot and store at -20°C or below. Avoid multiple freeze-thaw cycles.
Immunogen	Adenovirus encoding mouse SR-BI. [UniProt# Q61009]
Purification	Unpurified
Conjugation	Unconjugated

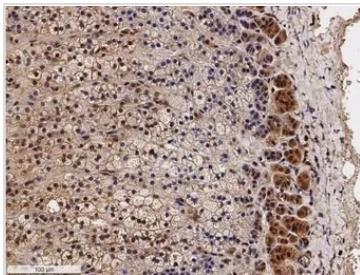
Note

For laboratory research use only. Not for any clinical, therapeutic, or diagnostic use in humans or animals. Not for animal or human consumption.

Purchasers shall not, and agree not to enable third parties to, analyze, copy, reverse engineer or otherwise attempt to determine the structure or sequence of the product.

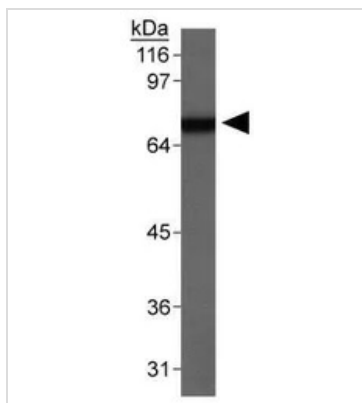


For full product information, images and publications, please visit our [website](#).

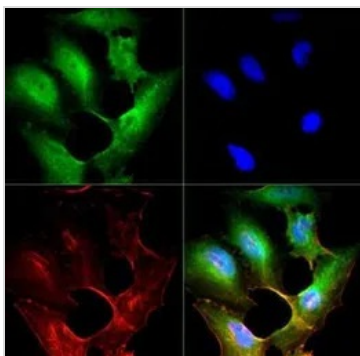
DATA IMAGES

GTX30467 IHC-P Image

IHC-P analysis of human adrenal gland tissue using GTX30467 SR-BI antibody.

Dilution : 1:100


GTX30467 WB Image

WB analysis of mouse testis tissue using GTX30467 SR-BI antibody.


GTX30467 ICC/IF Image

ICC/IF analysis of HeLa cells using GTX30467 SR-BI antibody.

Green : primary antibody

Red : Tubulin

Blue : DAPI



For full product information, images and publications, please visit our [website](#).