

## ABCF2 antibody

**Cat. No. GTX30469**

<b>Host</b>	Rabbit
<b>Clonality</b>	Polyclonal
<b>Isotype</b>	IgG
<b>Applications</b>	WB, ICC/IF
<b>Reactivity</b>	Human, Mouse, Yeast

**Package**  
100 µl

## Applications

**Application Note**

\*Optimal dilutions/concentrations should be determined by the researcher.

Suggested dilution	Recommended dilution
WB	1:500 - 1:1000
ICC/IF	1:500

Not tested in other applications.

**Calculated MW** 71 kDa. ([Note](#))

## Properties

<b>Form</b>	Liquid
<b>Buffer</b>	Serum
<b>Preservative</b>	0.05% Sodium azide
<b>Storage</b>	Store as concentrated solution. Centrifuge briefly prior to opening vial. For short-term storage (1-2 weeks), store at 4°C. For long-term storage, aliquot and store at -20°C or below. Avoid multiple freeze-thaw cycles.
<b>Immunogen</b>	A fusion protein containing amino acids 1-102 of the ABCF2 protein.
<b>Purification</b>	Unpurified
<b>Conjugation</b>	Unconjugated

**Note**

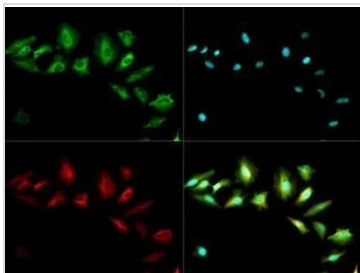
For laboratory research use only. Not for any clinical, therapeutic, or diagnostic use in humans or animals. Not for animal or human consumption.

Purchasers shall not, and agree not to enable third parties to, analyze, copy, reverse engineer or otherwise attempt to determine the structure or sequence of the product.



For full product information, images and publications, please visit our [website](#).

## DATA IMAGES

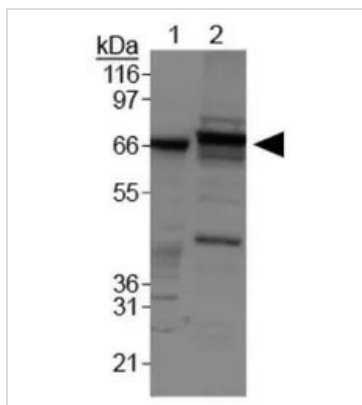
**GTX30469 ICC/IF Image**

ICC/IF analysis of HeLa cells using GTX30469 ABCF2 antibody.

Green : primary antibody

Red : Tubulin

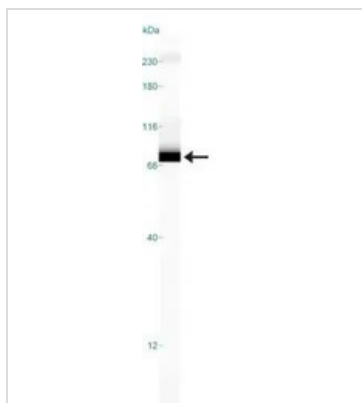
Blue : DAPI

**GTX30469 WB Image**

WB analysis of multiple samples using GTX30469 ABCF2 antibody.

Lane 1: HeLa cell lysate

Lane 2: NIH-3T3 cell lysate

**GTX30469 WB Image**

WB analysis of HeLa cell lysate using GTX30469 ABCF2 antibody.



For full product information, images and publications, please visit our [website](#).