

MAP1 antibody

Cat. No. GTX30482

Host	Rabbit
Clonality	Polyclonal
Isotype	IgG
Applications	WB
Reactivity	Human

Package
100 µg

Applications

Application Note

*Optimal dilutions/concentrations should be determined by the researcher.

Suggested dilution	Recommended dilution
WB	Assay dependent

Not tested in other applications.

Calculated MW 40 kDa. ([Note](#))

Product Note Reacts with residues 337-351 of the human MAP-1 protein.

Properties

Form Liquid

Storage Store as concentrated solution. Centrifuge briefly prior to opening vial. For short-term storage (1-2 weeks), store at 4°C. For long-term storage, aliquot and store at -20°C or below. Avoid multiple freeze-thaw cycles.

Concentration 1 mg/ml (Please refer to the vial label for the specific concentration.)

Conjugation Unconjugated

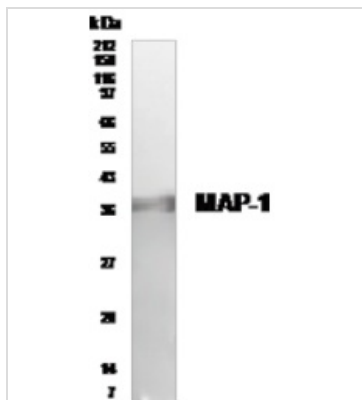
Note For laboratory research use only. Not for any clinical, therapeutic, or diagnostic use in humans or animals. Not for animal or human consumption.

Purchasers shall not, and agree not to enable third parties to, analyze, copy, reverse engineer or otherwise attempt to determine the structure or sequence of the product.



For full product information, images and publications, please visit our [website](#).

DATA IMAGES



GTX30482 WB Image

Western blot analysis of human MAP-1 in 293T cells with anti-MAP-1 at a 1:250 dilution



For full product information, images and publications, please visit our [website](https://www.genetex.com).