

Survivin (phospho Thr34) antibody

Cat. No. GTX30488

Host	Rabbit
Clonality	Polyclonal
Isotype	IgG
Applications	WB, ICC/IF
Reactivity	Human, Mouse, Bovine, Cat, Dog, Pig, Primate

Package
100 µl

Applications

Application Note

*Optimal dilutions/concentrations should be determined by the researcher.

Suggested dilution	Recommended dilution
WB	1:1000
ICC/IF	1:50 - 1:200

Not tested in other applications.

Calculated MW 16 kDa. ([Note](#))

Properties

Form	Liquid
Buffer	Tris-Citrate/Phosphate
Preservative	0.1% Sodium azide
Storage	Store as concentrated solution. Centrifuge briefly prior to opening vial. Store at 4°C. DO NOT FREEZE.
Concentration	1 mg/ml (Please refer to the vial label for the specific concentration.)
Immunogen	A synthetic peptide with a phosphorylated Threonine (amino acid 34) corresponding to human Survivin. [UniProt# O15392]
Purification	Purified by antigen-affinity chromatography
Conjugation	Unconjugated

Note

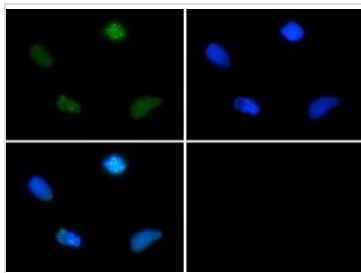
For laboratory research use only. Not for any clinical, therapeutic, or diagnostic use in humans or animals. Not for animal or human consumption.

Purchasers shall not, and agree not to enable third parties to, analyze, copy, reverse engineer or otherwise attempt to determine the structure or sequence of the product.



For full product information, images and publications, please visit our [website](#).

DATA IMAGES

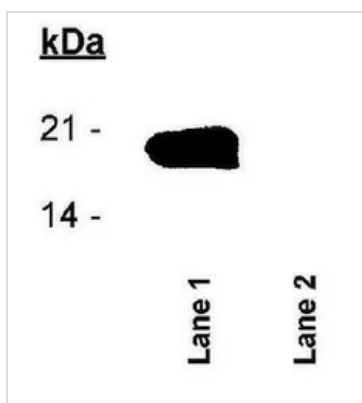


GTx30488 ICC/IF Image

ICC/IF analysis of HeLa cells using GTx30488 Survivin (phospho Thr34) antibody.

Green : primary antibody

Blue : DAPI



GTx30488 WB Image

WB analysis of phosphorylated Survivin protein (lane 1) and Non-phosphorylated Survivin protein (lane 2) using GTx30488 Survivin (phospho Thr34) antibody.



For full product information, images and publications, please visit our [website](#).