

6X His tag antibody

Cat. No. GTX30500

Host	Goat
Clonality	Polyclonal
Isotype	IgG
Applications	WB, ICC/IF, IP, ELISA, IHC
Reactivity	Species independent

References (1)

Package

100 µl

Applications

Application Note

*Optimal dilutions/concentrations should be determined by the researcher.

Suggested dilution	Recommended dilution
WB	1:100- 1:500
ICC/IF	1:100-1:400
IP	1-4µg antibody/mg lysate
ELISA	1:1,000-1:30,000 (Detection) ; 1:100-1:500 (Coating)
IHC	Assay dependent

Not tested in other applications.

Product Note This antibody does not recognize all N-terminal 6-His tagged proteins.

Properties

Form	Liquid
Buffer	PBS
Preservative	0.09% Sodium azide
Storage	Store as concentrated solution. Centrifuge briefly prior to opening vial. Store at 4°C.
Concentration	1 mg/ml (Please refer to the vial label for the specific concentration.)
Immunogen	6-His (HHHHHH) conjugated to KLH.
Purification	Purified by antigen-affinity chromatography
Conjugation	Unconjugated



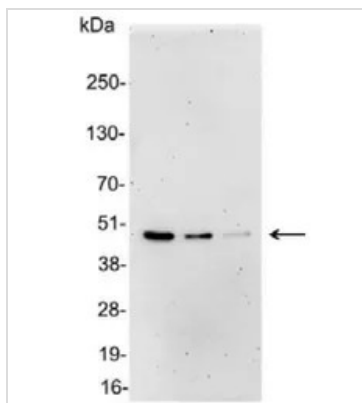
For full product information, images and publications, please visit our [website](#).

For laboratory research use only. Not for any clinical, therapeutic, or diagnostic use in humans or animals. Not for animal or human consumption.

Note

Purchasers shall not, and agree not to enable third parties to, analyze, copy, reverse engineer or otherwise attempt to determine the structure or sequence of the product.

DATA IMAGES



GTX30500 WB Image

WB analysis of 200, 100, and 50ng of E. coli lysate containing tagged fusion protein using GTX30500 6X His tag antibody.

Dilution : 1:5000



For full product information, images and publications, please visit our [website](https://www.genetex.com).