

## 6X His tag antibody (HRP)

**Cat. No. GTX30506**

<b>Host</b>	Goat
<b>Clonality</b>	Polyclonal
<b>Isotype</b>	IgG
<b>Application</b>	WB, ICC/IF, ELISA, IHC
<b>Reactivity</b>	Species independent

Reference ( 1 )

Package

100 µg

### APPLICATION

#### Application Note

\*Optimal dilutions/concentrations should be determined by the researcher.

Suggested dilution	Recommended dilution
WB	1:1,000-1:5,000
ICC/IF	1:200-1:500
ELISA	1:10,000-1:100,000
IHC	Assay dependent

Not tested in other applications.

**Product Note** This antibody does not recognize all N-terminal 6-His tagged proteins.

### PROPERTIES

<b>Form</b>	Liquid
<b>Buffer</b>	PBS, 0.2% BSA
<b>Preservative</b>	0.05% Pro-Clean 400
<b>Storage</b>	Store as concentrated solution. Centrifuge briefly prior to opening vial. Store at 4°C.
<b>Concentration</b>	1 mg/ml (Please refer to the vial label for the specific concentration.)
<b>Immunogen</b>	6-His (HHHHHH) conjugated to KLH.
<b>Purification</b>	Purified by antigen-affinity chromatography
<b>Conjugation</b>	Horseradish peroxidase(HRP) Ratio : 4 HRP molecules per IgG molecule.

#### Note

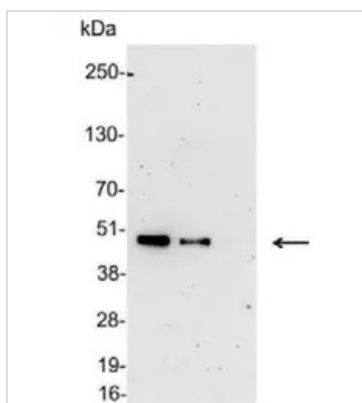
For laboratory research use only. Not for any clinical, therapeutic, or diagnostic use in humans or animals. Not for animal or human consumption.

Purchasers shall not, and agree not to enable third parties to, analyze, copy, reverse engineer or otherwise attempt to determine the structure or sequence of the product.



For full product information, images and publications, please visit our [website](#).

## DATA IMAGES



### GTX30506 WB Image

WB analysis of 200, 100, and 50ng of E. coli lysate containing tagged fusion protein using GTX30506 6X His tag antibody (HRP).

Dilution : 1:5000



For full product information, images and publications, please visit our [website](#).