

Goat Anti-Rabbit IgG antibody (FITC)

Cat. No. GTX30593

Host	Goat
Clonality	Polyclonal
Isotype	IgG
Applications	WB, ICC/IF, IHC-P, IHC-Fr, FCM, Dot, ELISA, Multiplexing
Reactivity	Rabbit

Package
500 µg

Applications

Application Note

*Optimal dilutions/concentrations should be determined by the researcher.

Suggested dilution	Recommended dilution
WB	Assay dependent
ICC/IF	1:1000-1:5000
IHC-P	Assay dependent
IHC-Fr	Assay dependent
FCM	1:500-1:2500
Dot	Assay dependent
ELISA	1:10000-1:50000
Multiplexing	Assay dependent

Not tested in other applications.

Properties

Form	Liquid
Buffer	20mM Potassium Phosphate, 150mM NaCl, 1% BSA
Preservative	0.01% Sodium Azide
Storage	Store as concentrated solution. Centrifuge briefly prior to opening vial. For short-term storage (1-2 weeks), store at 4°C. For long-term storage, aliquot and store at -20°C or below. Avoid multiple freeze-thaw cycles. Protect from light.
Concentration	2 mg/ml (Please refer to the vial label for the specific concentration.)
Immunogen	Rabbit IgG whole molecule
Purification	IgG fraction This product was prepared from monospecific antiserum by immunoaffinity chromatography using Rabbit IgG coupled to agarose beads followed by solid phase adsorptions to remove any unwanted reactivities.

For full product information, images and publications, please visit our [website](#).

Conjugation

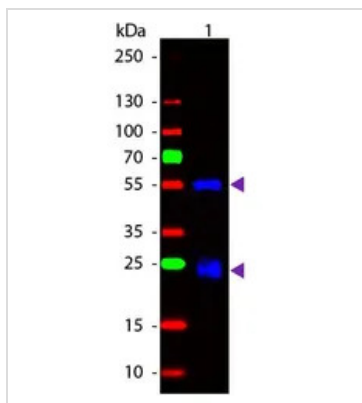
Fluorescein isothiocyanate (FITC) [Wavelength](#)
Ratio : 3.97 molecules FITC per Goat IgG molecule.

Note

For laboratory research use only. Not for any clinical, therapeutic, or diagnostic use in humans or animals. Not for animal or human consumption.

Purchasers shall not, and agree not to enable third parties to, analyze, copy, reverse engineer or otherwise attempt to determine the structure or sequence of the product.

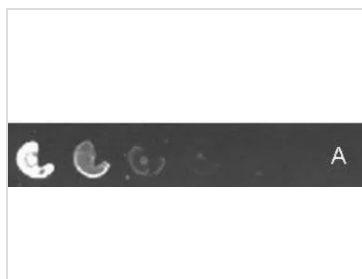
DATA IMAGES



GTx30593 WB Image

WB analysis of Rabbit IgG protein using GTx30593 Goat Anti-Rabbit IgG antibody (FITC).

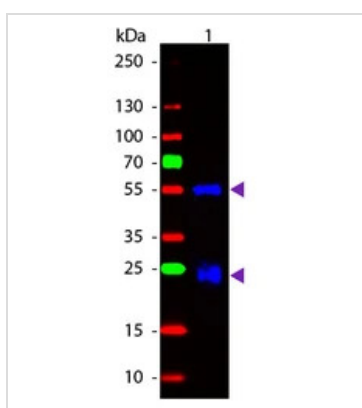
Loading : 50ng



GTx30593 Dot Image

Dot Blot analysis of nanogram – picogram levels of rabbit IgG using GTx30593 Goat Anti-Rabbit IgG antibody (FITC).

Dilution : 1:10,000



GTx30593 WB Image

WB analysis of rabbit IgG using GTx30593 Goat Anti-Rabbit IgG antibody (FITC).

Loading : 50 ng

Dilution : 1:1000



For full product information, images and publications, please visit our [website](#).