

## NPC1L1 antibody

**Cat. No. GTX30599**

<b>Host</b>	Rabbit
<b>Clonality</b>	Polyclonal
<b>Isotype</b>	IgG
<b>Applications</b>	WB, ICC/IF, IHC-P, EM
<b>Reactivity</b>	Human, Mouse, Rat, Pig

References ( 1 )

Package

100 µl

## Applications

**Application Note**

\*Optimal dilutions/concentrations should be determined by the researcher.

Suggested dilution	Recommended dilution
WB	1:500
ICC/IF	Assay dependent
IHC-P	1:100 - 1:250
EM	Assay dependent

Not tested in other applications.

**Calculated MW** 146 kDa. ([Note](#))

## Properties

<b>Form</b>	Liquid
<b>Buffer</b>	Tris-Citrate/Phosphate
<b>Preservative</b>	0.1% Sodium azide
<b>Storage</b>	Store as concentrated solution. Centrifuge briefly prior to opening vial. Store at 4°C. DO NOT FREEZE.
<b>Concentration</b>	1 mg/ml (Please refer to the vial label for the specific concentration.)
<b>Immunogen</b>	A synthetic peptide made to an internal region of rat Niemann-Pick type C1 Like-1 (between residues 1000-1100). [UniProt# Q6T3U3]
<b>Purification</b>	Purified by antigen-affinity chromatography
<b>Conjugation</b>	Unconjugated

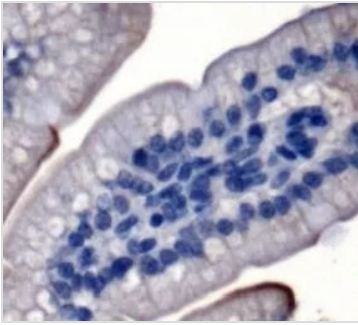
**Note**

For laboratory research use only. Not for any clinical, therapeutic, or diagnostic use in humans or animals. Not for animal or human consumption.

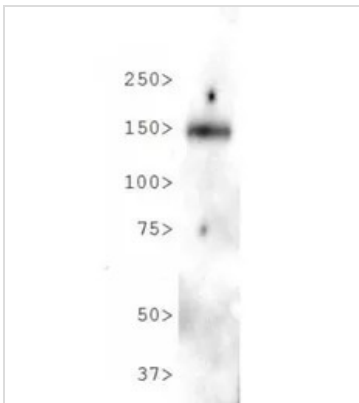
Purchasers shall not, and agree not to enable third parties to, analyze, copy, reverse engineer or otherwise attempt to determine the structure or sequence of the product.

For full product information, images and publications, please visit our [website](#).

## DATA IMAGES

**GTX30599 IHC-P Image**

IHC-P analysis of mouse intestine tissue using GTX30599 NPC1L1 antibody.

**GTX30599 WB Image**

WB analysis of human small intestine tissue lysate using GTX30599 NPC1L1 antibody.

Dilution : 2 µg/ml



For full product information, images and publications, please visit our [website](#).