

## GATA3 antibody [1A12-1D9]

Cat. No. GTX30600

Host	Mouse
Clonality	Monoclonal
Isotype	IgG1
Applications	WB, ICC/IF, IHC-P, IP
Reactivity	Human, Mouse, Rat

References ( 3 )

Package

100 µg

## Applications

## Application Note

\*Optimal dilutions/concentrations should be determined by the researcher.

Suggested dilution	Recommended dilution
WB	1:1000
ICC/IF	1:50-1:100
IHC-P	1:200-1:2000
IP	5µg

Not tested in other applications.

**Calculated MW** 48 kDa. ( [Note](#) )

**Product Note** Knockdown/Knockout validation was supported by references (PMID:28805661)

## Properties

Form	Liquid
Buffer	PBS, 0.1% BSA, 30% Glycerol
Preservative	0.05% Sodium azide
Storage	Store as concentrated solution. Centrifuge briefly prior to opening vial. For short-term storage (1-2 weeks), store at 4°C. For long-term storage, aliquot and store at -20°C or below. Avoid multiple freeze-thaw cycles.
Concentration	1 mg/ml (Please refer to the vial label for the specific concentration.)
Immunogen	Purified partial recombinant human GATA3 protein expressed in E. coli.
Purification	Protein A purified
Conjugation	Unconjugated

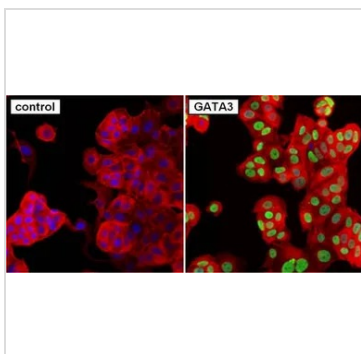


For full product information, images and publications, please visit our [website](#).

For laboratory research use only. Not for any clinical, therapeutic, or diagnostic use in humans or animals. Not for animal or human consumption.

**Note**

Purchasers shall not, and agree not to enable third parties to, analyze, copy, reverse engineer or otherwise attempt to determine the structure or sequence of the product.

**DATA IMAGES**

**GTX30600 ICC/IF Image**

ICC/IF analysis of MCF-7 cells using GTX30600 GATA3 antibody [1A12-1D9]. Cells were probed without (left) or with(right) an antibody.

Green : Primary antibody

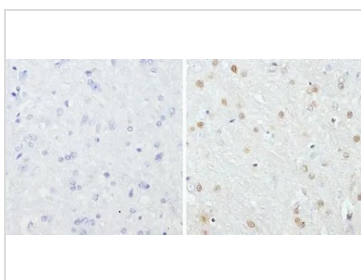
Blue : Nuclei

Red : Actin

Fixation : Formalin

Permeabilization : 0.1% Triton X-100 in TBS for 10 minutes

Dilution : 1:50 for at least 1 hour at room temperature


**GTX30600 IHC-P Image**

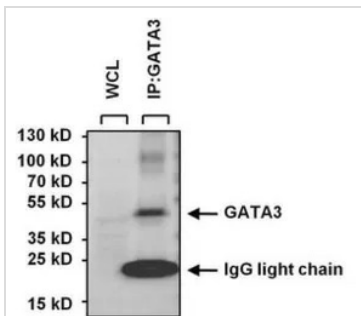
IHC-P analysis of rat brain tissue using GTX30600 GATA3 antibody [1A12-1D9].

Right : Primary antibody

Left : Negative control without primary antibody

Antigen retrieval : 10mM sodium citrate (pH 6.0), microwaved for 8-15 min

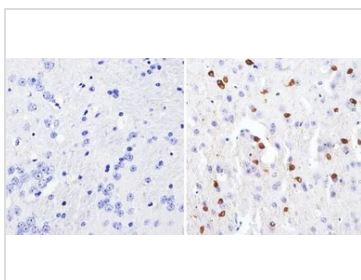
Dilution : 1:200


**GTX30600 IP Image**

IP analysis of SH-SY5Y cell lysates using GTX30600 GATA3 antibody [1A12-1D9].

IP reaction : 5µl antibody / 250µg lysate

Dilution : 1:1000


**GTX30600 IHC-P Image**

IHC-P analysis of mouse brain tissue using GTX30600 GATA3 antibody [1A12-1D9].

Right : Primary antibody

Left : Negative control without primary antibody

Antigen retrieval : 10mM sodium citrate (pH 6.0), microwaved for 8-15 min

Dilution : 1:1000



For full product information, images and publications, please visit our [website](https://www.genetex.com).