

FXR2 antibody [1G2]

Cat. No. GTX30602

| | |
|---------------------|-------------------|
| Host | Mouse |
| Clonality | Monoclonal |
| Isotype | IgG1 |
| Applications | WB, ICC/IF, IHC-P |
| Reactivity | Human, Mouse |

Package
100 µl

Applications

Application Note

*Optimal dilutions/concentrations should be determined by the researcher.

| Suggested dilution | Recommended dilution |
|--------------------|----------------------|
| WB | 1:500 - 1:2500 |
| ICC/IF | 1:100 - 1:200 |
| IHC-P | 20 µg/ml |

Not tested in other applications.

Calculated MW 74 kDa. ([Note](#))

Properties

| | |
|----------------------|--|
| Form | Liquid |
| Buffer | PBS |
| Preservative | 0.01% Sodium azide |
| Storage | Store as concentrated solution. Centrifuge briefly prior to opening vial. For short-term storage (1-2 weeks), store at 4°C. For long-term storage, aliquot and store at -20°C or below. Avoid multiple freeze-thaw cycles. |
| Concentration | 1 mg/ml (Please refer to the vial label for the specific concentration.) |
| Immunogen | Recombinant C-terminal fragment of human FXR2 (residues 414-658). [UniProt# P51116] |
| Purification | Protein G purified |
| Conjugation | Unconjugated |

Note

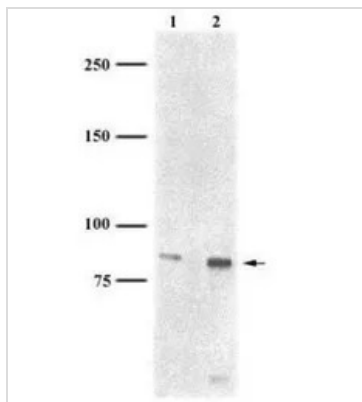
For laboratory research use only. Not for any clinical, therapeutic, or diagnostic use in humans or animals. Not for animal or human consumption.

Purchasers shall not, and agree not to enable third parties to, analyze, copy, reverse engineer or otherwise attempt to determine the structure or sequence of the product.



For full product information, images and publications, please visit our [website](#).

DATA IMAGES

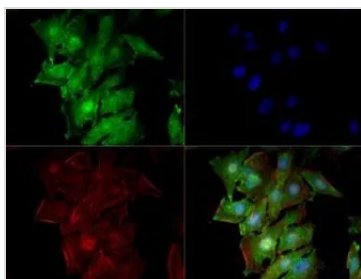


GTX30602 WB Image

WB analysis of HeLa cell lysate using GTX30602 FXR2 antibody [1G2].

Lane 1: 1:2500

Lane 2 : 1:500



GTX30602 ICC/IF Image

ICC/IF analysis of HeLa cells using GTX30602 FXR2 antibody [1G2].

Green : primary antibody

Red : Tubulin

Blue : DAPI



For full product information, images and publications, please visit our [website](#).