

# WNK4 antibody

**Cat. No. GTX30604**

<b>Host</b>	Rabbit
<b>Clonality</b>	Polyclonal
<b>Isotype</b>	IgG
<b>Application</b>	WB, IHC-P, IHC-Fr, EM
<b>Reactivity</b>	Human, Mouse, Rat

**Package**  
100 µl

## APPLICATION

### Application Note

\*Optimal dilutions/concentrations should be determined by the researcher.

Suggested dilution	Recommended dilution
WB	2 µg/ml
IHC-P	Assay dependent
IHC-Fr	Assay dependent
EM	Assay dependent

Not tested in other applications.

**Calculated MW** 135 kDa. ([Note](#))

## PROPERTIES

<b>Form</b>	Liquid
<b>Buffer</b>	PBS
<b>Preservative</b>	0.02% Sodium azide
<b>Storage</b>	Store as concentrated solution. Centrifuge briefly prior to opening vial. For short-term storage (1-2 weeks), store at 4°C. For long-term storage, aliquot and store at -20°C or below. Avoid multiple freeze-thaw cycles.
<b>Concentration</b>	1 mg/ml (Please refer to the vial label for the specific concentration.)
<b>Immunogen</b>	A synthetic peptide made to a region of the human WNK4 protein between residues 200-300. [UniProt# Q96J92]
<b>Purification</b>	Purified by antigen-affinity chromatography
<b>Conjugation</b>	Unconjugated

### Note

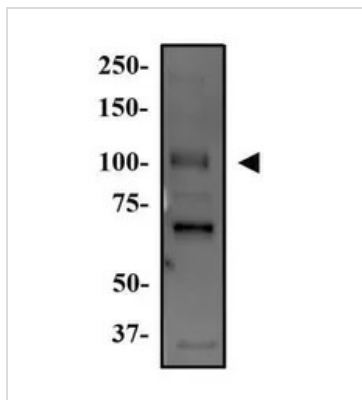
For laboratory research use only. Not for any clinical, therapeutic, or diagnostic use in humans or animals. Not for animal or human consumption.

Purchasers shall not, and agree not to enable third parties to, analyze, copy, reverse engineer or otherwise attempt to determine the structure or sequence of the product.



For full product information, images and publications, please visit our [website](#).

## DATA IMAGES



### GTX30604 WB Image

WB analysis of HEK293 cell lysate using GTX30604 WNK4 antibody.

Dilution : 2 µg/ml



For full product information, images and publications, please visit our [website](https://www.genetex.com).