

## EP300 antibody [RW128]

**Cat. No. GTX30614**

<b>Host</b>	Mouse
<b>Clonality</b>	Monoclonal
<b>Isotype</b>	IgG1
<b>Applications</b>	WB, ICC/IF, FCM, IP
<b>Reactivity</b>	Human, Mouse, Rat, Mustelid, Primate

References ( 1 )

Package

100 µg

## Applications

**Application Note**

\*Optimal dilutions/concentrations should be determined by the researcher.

Suggested dilution	Recommended dilution
WB	1:250 - 1:500
ICC/IF	1:10 - 1:2000
FCM	1 µg/ml
IP	1:10 - 1:500

**Note : Permibilization : 0.1% saponin**

Not tested in other applications.

**Calculated MW** 264 kDa. ([Note](#))

## Properties

<b>Form</b>	Liquid
<b>Buffer</b>	PBS
<b>Preservative</b>	0.1% Sodium azide
<b>Storage</b>	Store as concentrated solution. Centrifuge briefly prior to opening vial. For short-term storage (1-2 weeks), store at 4°C. For long-term storage, aliquot and store at -20°C or below. Avoid multiple freeze-thaw cycles.
<b>Concentration</b>	1 mg/ml (Please refer to the vial label for the specific concentration.)
<b>Immunogen</b>	Fusion protein containing residues 1572-2371 of human KAT3B/p300. [UniProt# Q0947]
<b>Purification</b>	Protein A purified
<b>Conjugation</b>	Unconjugated



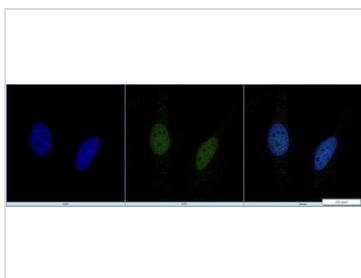
For full product information, images and publications, please visit our [website](#).

For laboratory research use only. Not for any clinical, therapeutic, or diagnostic use in humans or animals. Not for animal or human consumption.

**Note**

Purchasers shall not, and agree not to enable third parties to, analyze, copy, reverse engineer or otherwise attempt to determine the structure or sequence of the product.

## DATA IMAGES

**GTX30614 ICC/IF Image**

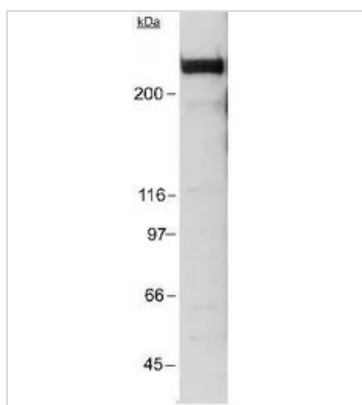
ICC/IF analysis of PFA-fixed HeLa cells using GTX30614 EP300 antibody [RW128].

Green : Primary antibody

Blue : DAPI

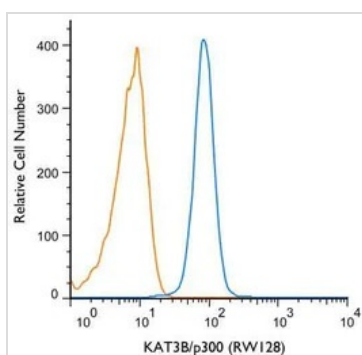
Permeabilization : 0.05% Triton X-100 in PBS

Dilution : 5 µg/mL

**GTX30614 WB Image**

WB analysis of HeLa nuclear extract using GTX30614 EP300 antibody [RW128].

Dilution : 1:250

**GTX30614 FCM Image**

FACS (Intracellular staining) analysis of THP-1 cells using GTX30614 EP300 antibody [RW128].

Blue : Primary antibody

Orange : isotype control

Dilution : 1 µg/mL

Fixation : 4% PFA

Permibilization : 0.1% saponin



For full product information, images and publications, please visit our [website](#).