

NOD2 antibody [2D9]

Cat. No. GTX30615

Host	Mouse
Clonality	Monoclonal
Isotype	IgG1
Applications	WB, ICC/IF, IHC-P, FCM, IP
Reactivity	Human, Mouse, Primate

References (1)

Package

100 µl

Applications

Application Note

*Optimal dilutions/concentrations should be determined by the researcher.

Suggested dilution	Recommended dilution
WB	1:100 - 1:2000
ICC/IF	1:50 - 1:500
IHC-P	1:10 - 1:500
FCM	Assay dependent
IP	1:10 - 1:500

Not tested in other applications.

Calculated MW 115 kDa. ([Note](#))

Properties

Form	Liquid
Buffer	PBS
Preservative	0.05% Sodium azide
Storage	Store as concentrated solution. Centrifuge briefly prior to opening vial. For short-term storage (1-2 weeks), store at 4°C. For long-term storage, aliquot and store at -20°C or below. Avoid multiple freeze-thaw cycles.
Concentration	1 mg/ml (Please refer to the vial label for the specific concentration.)
Immunogen	Recombinant human NOD2 protein corresponding to residues 28-301. [UniProt# Q9HC29]
Purification	Protein G purified
Conjugation	Unconjugated



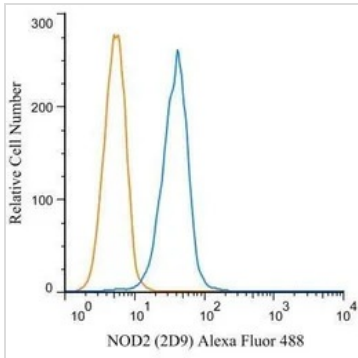
For full product information, images and publications, please visit our [website](#).

For laboratory research use only. Not for any clinical, therapeutic, or diagnostic use in humans or animals. Not for animal or human consumption.

Note

Purchasers shall not, and agree not to enable third parties to, analyze, copy, reverse engineer or otherwise attempt to determine the structure or sequence of the product.

DATA IMAGES



GTX30615 FCM Image

FACS (Intracellular staining) analysis of Raji cells using GTX30615 NOD2 antibody [2D9].

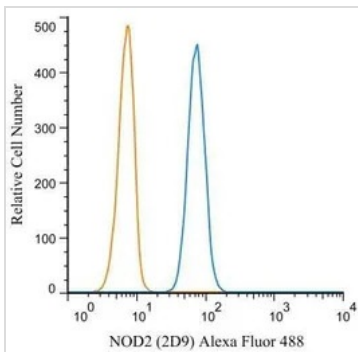
Blue : Primary antibody

Orange : isotype control

Dilution : 5 µg/ml

Fixation : 4% PFA

Permibilization : 0.1% saponin



GTX30615 FCM Image

FACS (Intracellular staining) analysis of THP-1 cells using GTX30615 NOD2 antibody [2D9].

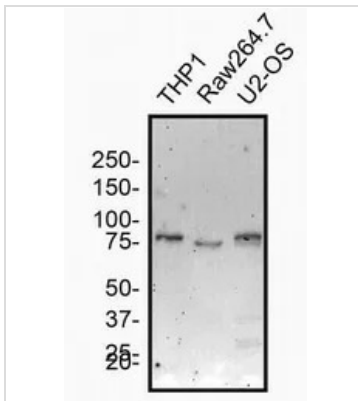
Blue : Primary antibody

Orange : isotype control

Dilution : 5 µg/ml

Fixation : 4% PFA

Permibilization : 0.1% saponin



GTX30615 WB Image

WB analysis of THP-1, RAW264.7, and U2OS cell lysate using GTX30615 NOD2 antibody [2D9].

Dilution : 2 µg/ml



For full product information, images and publications, please visit our [website](https://www.genetex.com).