

## EP300 antibody [RW109]

Cat. No. GTX30619

Host	Mouse
Clonality	Monoclonal
Isotype	IgG1
Applications	WB, ICC/IF, IP, ChIP assay
Reactivity	Human, Mouse, Rat, Mustelid, Primate

References ( 1 )

Package

200 µl

## Applications

## Application Note

\*Optimal dilutions/concentrations should be determined by the researcher.

Suggested dilution	Recommended dilution
WB	1:1000
ICC/IF	1:100 - 1:200
IP	1:10 - 1:500
ChIP assay	Assay dependent

Not tested in other applications.

**Calculated MW** 264 kDa. ( [Note](#) )

**Product Note** This is specific for p300 protein. This recognizes residues 2107-2283.

## Properties

Form	Liquid
Buffer	Ascites
Preservative	0.1% Sodium azide
Storage	Store as concentrated solution. Centrifuge briefly prior to opening vial. For short-term storage (1-2 weeks), store at 4°C. For long-term storage, aliquot and store at -20°C or below. Avoid multiple freeze-thaw cycles.
Immunogen	Fusion protein containing residues 1572-2371 of human KAT3B/p300. [UniProt# Q0947]
Purification	Unpurified
Conjugation	Unconjugated

## Note

For laboratory research use only. Not for any clinical, therapeutic, or diagnostic use in humans or animals. Not for animal or human consumption.

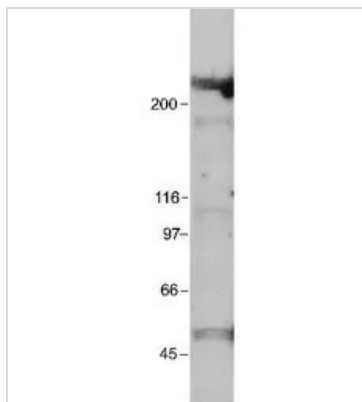
Purchasers shall not, and agree not to enable third parties to, analyze, copy, reverse engineer or otherwise attempt to determine the structure or sequence of the product.



For full product information, images and publications, please visit our [website](#).

Date 2026 / 01 / 28 Page 1 of 2

## DATA IMAGES



### GTX30619 WB Image

WB analysis of HeLa nuclear extract using GTX30619 EP300 antibody [RW109].

Dilution : 1:1000



For full product information, images and publications, please visit our [website](#).