

NABC1 antibody

Cat. No. GTX30622

| | |
|--------------|------------|
| Host | Rabbit |
| Clonality | Polyclonal |
| Isotype | IgG |
| Applications | WB |
| Reactivity | Human |

Package
100 µg

Applications

Application Note

*Optimal dilutions/concentrations should be determined by the researcher.

| Suggested dilution | Recommended dilution |
|--------------------|----------------------|
| WB | 1:100 - 1:2000 |

Not tested in other applications.

Calculated MW 62 kDa. ([Note](#))

Properties

| | |
|---------------|--|
| Form | Liquid |
| Buffer | PBS |
| Preservative | 0.02% Sodium azide |
| Storage | Store as concentrated solution. Centrifuge briefly prior to opening vial. For short-term storage (1-2 weeks), store at 4°C. For long-term storage, aliquot and store at -20°C or below. Avoid multiple freeze-thaw cycles. |
| Concentration | 1 mg/ml (Please refer to the vial label for the specific concentration.) |
| Immunogen | Reacts with residues 532-550 [DTNSLQNGDKLQKRPEKQK] of human NABC1. |
| Purification | Purified by antigen-affinity chromatography |
| Conjugation | Unconjugated |

Note

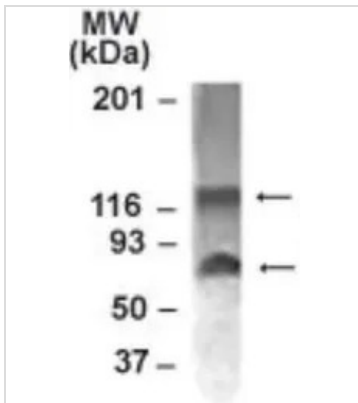
For laboratory research use only. Not for any clinical, therapeutic, or diagnostic use in humans or animals. Not for animal or human consumption.

Purchasers shall not, and agree not to enable third parties to, analyze, copy, reverse engineer or otherwise attempt to determine the structure or sequence of the product.



For full product information, images and publications, please visit our [website](#).

DATA IMAGES

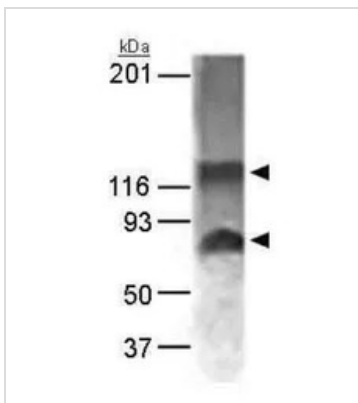


GTX30622 WB Image

WB analysis of MCF-7 cell lysate using GTX30622 NABC1 antibody.

Dilution : 1:1000

Loading : 15µg

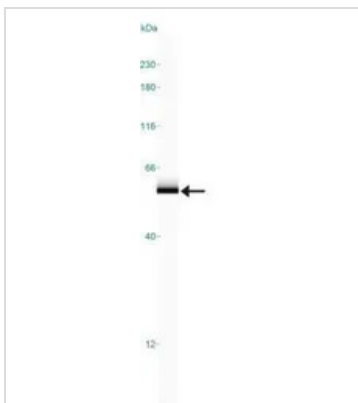


GTX30622 WB Image

WB analysis of MCF-7 cell lysate using GTX30622 NABC1 antibody.

Loading : 15µg

Dilution : 1:1000



GTX30622 WB Image

WB analysis of MCF-7 cell lysate using GTX30622 NABC1 antibody.



For full product information, images and publications, please visit our [website](https://www.genetex.com).