

## KSHV LANA2 antibody [CM-A807]

Cat. No. GTX30624

Host	Mouse
Clonality	Monoclonal
Isotype	IgG1
Application	WB, ICC/IF, IHC-P, IHC-Fr, IP, ELISA
Reactivity	Kaposi's sarcoma-associated herpesvirus

Package  
100 µl

## APPLICATION

## Application Note

\*Optimal dilutions/concentrations should be determined by the researcher.

Suggested dilution	Recommended dilution
WB	2 - 4 µg/ml
ICC/IF	1:10 - 1:500
IHC-P	1:10 - 1:500
IHC-Fr	1:10 - 1:500
IP	1:10 - 1:500
ELISA	1:100 - 1:2000

Not tested in other applications.

**Product Note** This is specific for KSHV LANA2 (residues 143-310 epitope recognition).

## PROPERTIES

Form	Liquid
Buffer	PBS
Preservative	0.1% Sodium azide
Storage	Store as concentrated solution. Centrifuge briefly prior to opening vial. For short-term storage (1-2 weeks), store at 4°C. For long-term storage, aliquot and store at -20°C or below. Avoid multiple freeze-thaw cycles.
Concentration	2 mg/ml (Please refer to the vial label for the specific concentration.)
Immunogen	Recombinant LANA2 fusion protein.
Purification	Protein G purified
Conjugation	Unconjugated



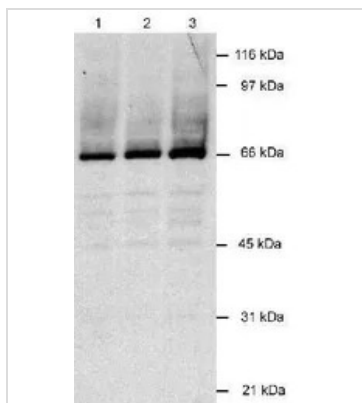
For full product information, images and publications, please visit our [website](#).

For laboratory research use only. Not for any clinical, therapeutic, or diagnostic use in humans or animals. Not for animal or human consumption.

**Note**

Purchasers shall not, and agree not to enable third parties to, analyze, copy, reverse engineer or otherwise attempt to determine the structure or sequence of the product.

## DATA IMAGES



### GTx30624 WB Image

WB analysis of infected lysate using GTx30624 KSHV LANA2 antibody [CM-A807].

Lane 1: BCBL-1 cell(KSHV+)

Lane 2: BC-1 cell(KSHV+/EBV+)

Lane 3: BCP-1 cell(KSHV+)

Loading : 30µg

Dilution : 2 µg/ml



For full product information, images and publications, please visit our [website](https://www.genetex.com).