

## NQO1 antibody [A180]

Cat. No. GTX30626

<b>Host</b>	Mouse
<b>Clonality</b>	Monoclonal
<b>Isotype</b>	IgG1
<b>Applications</b>	WB, ICC/IF, IHC-P, IHC-Fr, FCM, IP
<b>Reactivity</b>	Human, Mouse, Rat, Dog, Primate

References ( 2 )

Package

100 µl

## Applications

## Application Note

\*Optimal dilutions/concentrations should be determined by the researcher.

Suggested dilution	Recommended dilution
WB	1:1000
ICC/IF	1:50
IHC-P	1:100
IHC-Fr	1:100
FCM	1 - 2 µg/mL
IP	1:1000

Not tested in other applications.

**Calculated MW** 31 kDa. ( [Note](#) )**Product Note** Does not cross-react with NQO2.

## Properties

<b>Form</b>	Liquid
<b>Buffer</b>	Tris-Glycine, 150mM NaCl
<b>Preservative</b>	0.05% Sodium azide
<b>Storage</b>	Store as concentrated solution. Centrifuge briefly prior to opening vial. For short-term storage (1-2 weeks), store at 4°C. For long-term storage, aliquot and store at -20°C or below. Avoid multiple freeze-thaw cycles.
<b>Concentration</b>	1 mg/ml (Please refer to the vial label for the specific concentration.)
<b>Immunogen</b>	Full length recombinant NQO1 from human lung [UniProt# P15559]
<b>Purification</b>	Protein G purified
<b>Conjugation</b>	Unconjugated

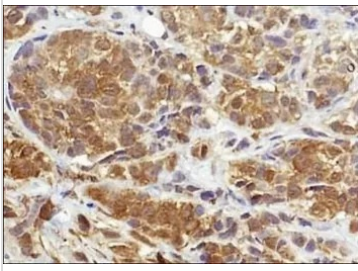


For full product information, images and publications, please visit our [website](#).

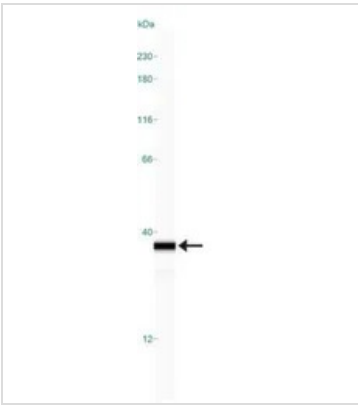
For laboratory research use only. Not for any clinical, therapeutic, or diagnostic use in humans or animals. Not for animal or human consumption.

**Note**

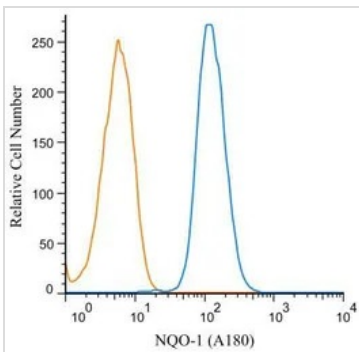
Purchasers shall not, and agree not to enable third parties to, analyze, copy, reverse engineer or otherwise attempt to determine the structure or sequence of the product.

**DATA IMAGES**

**GTX30626 IHC-P Image**

IHC-P analysis of human breast carcinoma tissue using GTX30626 NQO1 antibody [A180].


**GTX30626 WB Image**

WB analysis of A431 cell lysate using GTX30626 NQO1 antibody [A180].


**GTX30626 FCM Image**

FACS (Intracellular staining) analysis of U87-MG cells using GTX30626 NQO1 antibody [A180].

Blue : Primary antibody

Orange : isotype control

Dilution : 1 µg/mL

Fixation : 4% PFA

Permibilization : 0.1% saponin



For full product information, images and publications, please visit our [website](https://www.genetex.com).