

Thimet Oligopeptidase antibody [4D6]

Cat. No. GTX30631

Host	Mouse
Clonality	Monoclonal
Isotype	IgG2b
Applications	WB, ICC/IF, IHC-P
Reactivity	Human, Mouse, Rat, Rabbit, Primate

Package
50 µl

Applications

Application Note

*Optimal dilutions/concentrations should be determined by the researcher.

Suggested dilution	Recommended dilution
WB	1:750 - 1:3000
ICC/IF	1:10 - 1:500
IHC-P	1:400

Not tested in other applications.

Calculated MW 79 kDa. ([Note](#))

Properties

Form	Liquid
Buffer	Tris-Glycine, 150mM NaCl
Preservative	0.05% Sodium azide
Storage	Store as concentrated solution. Centrifuge briefly prior to opening vial. For short-term storage (1-2 weeks), store at 4°C. For long-term storage, aliquot and store at -20°C or below. Avoid multiple freeze-thaw cycles.
Concentration	1.54 mg/ml (Please refer to the vial label for the specific concentration.)
Immunogen	A synthetic peptide corresponding to residues 56-72 of human Thimet Oligopeptidase. [UniProt# P52888]
Purification	Protein A purified
Conjugation	Unconjugated

Note

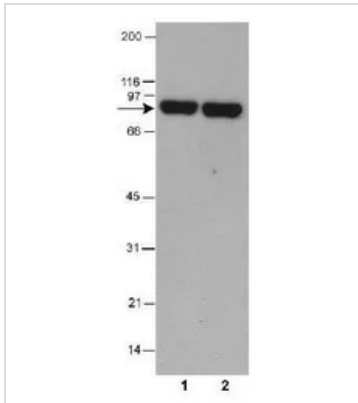
For laboratory research use only. Not for any clinical, therapeutic, or diagnostic use in humans or animals. Not for animal or human consumption.

Purchasers shall not, and agree not to enable third parties to, analyze, copy, reverse engineer or otherwise attempt to determine the structure or sequence of the product.



For full product information, images and publications, please visit our [website](#).

DATA IMAGES

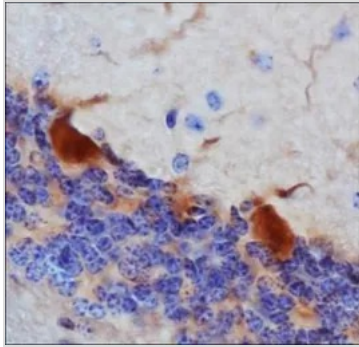
**GTX30631 WB Image**

WB analysis of HeLa cell lysate using GTX30631 Thimet Oligopeptidase antibody [4D6].

Lane 1 : 0.5 ug/ml

Lane 2 : 2 ug/ml

Loading : 30µg

**GTX30631 IHC-P Image**

IHC-P analysis of mouse brain tissue using GTX30631 Thimet Oligopeptidase antibody [4D6].



For full product information, images and publications, please visit our [website](#).