

ATM (phospho Ser1981) antibody [10H11.E12]

Cat. No. GTX30636

Host	Mouse
Clonality	Monoclonal
Isotype	IgG1
Applications	WB, ICC/IF, IHC-P, IP
Reactivity	Human, Mouse, Rat

References (3)

Package

100 µl

Applications

Application Note

*Optimal dilutions/concentrations should be determined by the researcher.

Suggested dilution	Recommended dilution
WB	1:1000
ICC/IF	1:1000
IHC-P	1:200
IP	1:10 - 1:500

Not tested in other applications.

Calculated MW 351 kDa. ([Note](#))

Properties

Form	Liquid
Buffer	Tris-Glycine, 150mM NaCl
Preservative	0.05% Sodium azide
Storage	Store as concentrated solution. Centrifuge briefly prior to opening vial. For short-term storage (1-2 weeks), store at 4°C. For long-term storage, aliquot and store at -20°C or below. Avoid multiple freeze-thaw cycles.
Concentration	1 mg/ml (Please refer to the vial label for the specific concentration.)
Immunogen	Synthetic peptide made to a region surrounding the phosphorylated Serine 1981 of human ATM. [UniProt# Q13315]
Purification	Protein G purified
Conjugation	Unconjugated

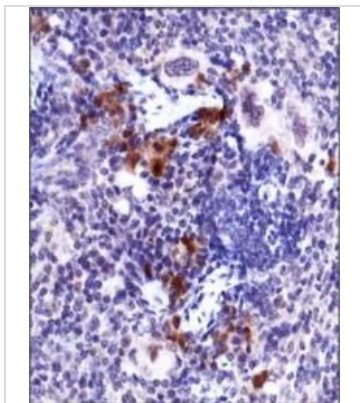
Note

For laboratory research use only. Not for any clinical, therapeutic, or diagnostic use in humans or animals. Not for animal or human consumption.

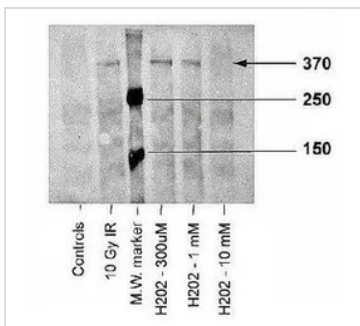
Purchasers shall not, and agree not to enable third parties to, analyze, copy, reverse engineer or otherwise attempt to determine the structure or sequence of the product.



For full product information, images and publications, please visit our [website](#).

DATA IMAGES

GTX30636 IHC-P Image

IHC-P analysis of mouse spleen tissue using GTX30636 ATM (phospho Ser1981) antibody [10H11.E12].


GTX30636 WB Image

WB analysis of irradiate or peroxidase treated human fibroblast lysate using GTX30636 ATM (phospho Ser1981) antibody [10H11.E12].



For full product information, images and publications, please visit our [website](https://www.genetex.com).