

## RNase L antibody [2E9]

**Cat. No. GTX30638**

<b>Host</b>	Mouse
<b>Clonality</b>	Monoclonal
<b>Isotype</b>	IgG1
<b>Applications</b>	WB, IHC-P, ELISA
<b>Reactivity</b>	Human, Hamster, Primate

**Package**  
100 µl

## Applications

**Application Note**

\*Optimal dilutions/concentrations should be determined by the researcher.

Suggested dilution	Recommended dilution
WB	1:1000 - 1:4000
IHC-P	1:200 - 1:1000
ELISA	1:100 - 1:2000

Not tested in other applications.

**Calculated MW** 84 kDa. ([Note](#))

**Product Note** We do not recommend use of this product for Mouse,Rat samples.

## Properties

<b>Form</b>	Liquid
<b>Buffer</b>	PBS
<b>Preservative</b>	0.1% Sodium azide
<b>Storage</b>	Store as concentrated solution. Centrifuge briefly prior to opening vial. For short-term storage (1-2 weeks), store at 4°C. For long-term storage, aliquot and store at -20°C or below. Avoid multiple freeze-thaw cycles.
<b>Concentration</b>	1.7 mg/ml (Please refer to the vial label for the specific concentration.)
<b>Immunogen</b>	Purified full-length recombinant human RNaseL produced in insect cells. [UniProt# Q05823]
<b>Purification</b>	Protein G purified
<b>Conjugation</b>	Unconjugated

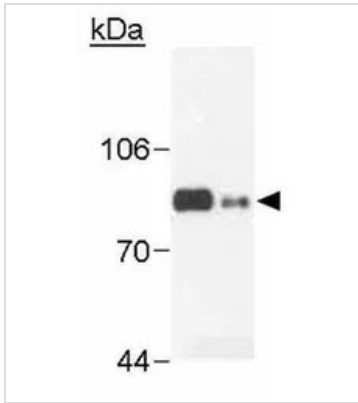


For full product information, images and publications, please visit our [website](#).

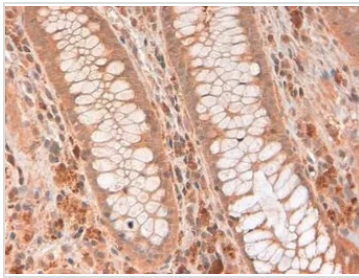
For laboratory research use only. Not for any clinical, therapeutic, or diagnostic use in humans or animals. Not for animal or human consumption.

**Note**  
Purchasers shall not, and agree not to enable third parties to, analyze, copy, reverse engineer or otherwise attempt to determine the structure or sequence of the product.

## DATA IMAGES

**GTX30638 WB Image**

WB analysis of insect cell transfected with human RNase L (0.1 ug) and Hey1B (100 ug) lysate using GTX30638 RNase L antibody [2E9].

**GTX30638 IHC-P Image**

IHC-P analysis of human colon tissue using GTX30638 RNase L antibody [2E9].



For full product information, images and publications, please visit our [website](#).