

ATP7b antibody

Cat. No. GTX30639

Host	Rabbit
Clonality	Polyclonal
Isotype	IgG
Applications	WB, ICC/IF, IHC-P, IP, IHC, PLA
Reactivity	Human, Mouse, Rat

References (4)

Package

100 µl

Applications

Application Note

*Optimal dilutions/concentrations should be determined by the researcher.

Suggested dilution	Recommended dilution
WB	1:1000
ICC/IF	2 - 10 µg/ml
IHC-P	1:100 - 1:500
IP	Assay dependent
IHC	1:100 - 1:500
PLA	Assay dependent

Not tested in other applications.

Calculated MW 157 kDa. ([Note](#))

Properties

Form	Liquid
Buffer	PBS
Preservative	0.02% Sodium azide
Storage	Store as concentrated solution. Centrifuge briefly prior to opening vial. Store at 4°C. DO NOT FREEZE.
Concentration	1 mg/ml (Please refer to the vial label for the specific concentration.)
Immunogen	A synthetic peptide made to an internal sequence near the N-terminus of human ATP7b. [UniProt# P35670]
Purification	Purified by antigen-affinity chromatography
Conjugation	Unconjugated



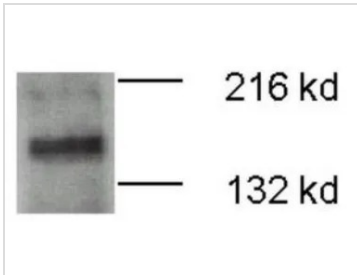
For full product information, images and publications, please visit our [website](#).

For laboratory research use only. Not for any clinical, therapeutic, or diagnostic use in humans or animals. Not for animal or human consumption.

Note

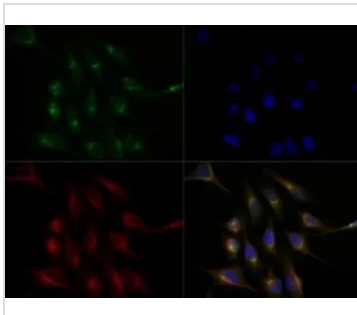
Purchasers shall not, and agree not to enable third parties to, analyze, copy, reverse engineer or otherwise attempt to determine the structure or sequence of the product.

DATA IMAGES



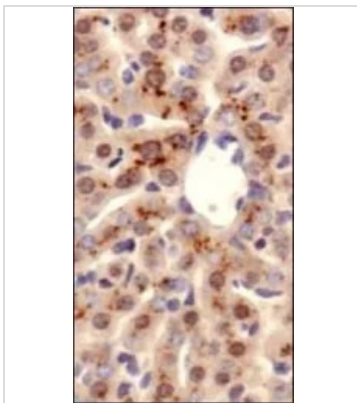
GTX30639 WB Image

WB analysis of mouse brain membrane fraction extract using GTX30639 ATP7b antibody.
Loading : 20µg



GTX30639 ICC/IF Image

ICC/IF analysis of HeLa cells using GTX30639 ATP7b antibody.
Green : primary antibody
Red : Tubulin
Blue : DAPI
Dilution : 1:100
Fixation : 10% formalin
Permibilization : 0.5% Triton-X100



GTX30639 IHC-P Image

IHC-P analysis of mouse liver tissue using GTX30639 ATP7b antibody.



For full product information, images and publications, please visit our [website](https://www.genetex.com).