

# HIF1AN antibody

**Cat. No. GTX30646**

<b>Host</b>	Rabbit
<b>Clonality</b>	Polyclonal
<b>Isotype</b>	IgG
<b>Applications</b>	WB, ICC/IF, IHC-P, IHC-Fr, IP, EM, IHC
<b>Reactivity</b>	Human, Mouse, Rat

**Package**  
100 µl

## Applications

### Application Note

\*Optimal dilutions/concentrations should be determined by the researcher.

Suggested dilution	Recommended dilution
WB	1:1000 - 1:5000
ICC/IF	Assay dependent
IHC-P	1:50 - 1:200
IHC-Fr	1:50 - 1:200
IP	1:10 - 1:500
EM	Assay dependent
IHC	1:100

Not tested in other applications.

**Calculated MW** 40 kDa. ( [Note](#) )

## Properties

<b>Form</b>	Liquid
<b>Buffer</b>	Tris-Citrate/Phosphate
<b>Preservative</b>	0.1% Sodium azide
<b>Storage</b>	Store as concentrated solution. Centrifuge briefly prior to opening vial. Store at 4°C. DO NOT FREEZE.
<b>Concentration</b>	1 mg/ml (Please refer to the vial label for the specific concentration.)
<b>Immunogen</b>	A synthetic peptide made to the C-terminal region of human Factor Inhibiting HIF-1 (between residues 300 and the C-terminus). [UniProt# Q9NWT6]
<b>Purification</b>	Purified by antigen-affinity chromatography
<b>Conjugation</b>	Unconjugated



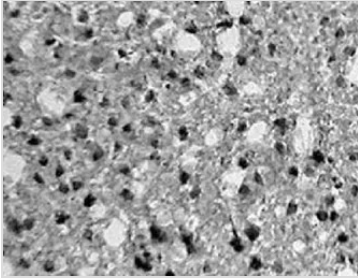
For full product information, images and publications, please visit our [website](#).

For laboratory research use only. Not for any clinical, therapeutic, or diagnostic use in humans or animals. Not for animal or human consumption.

**Note**

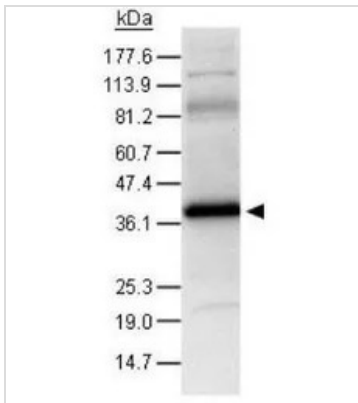
Purchasers shall not, and agree not to enable third parties to, analyze, copy, reverse engineer or otherwise attempt to determine the structure or sequence of the product.

## DATA IMAGES



**GTX30646 IHC Image**

IHC analysis of rat brain tissue using GTX30646 HIF1AN antibody.



**GTX30646 WB Image**

WB analysis of astrocyte lysate from rat brain using GTX30646 HIF1AN antibody.  
Dilution : 1:500



For full product information, images and publications, please visit our [website](#).