

## DLX4 antibody

Cat. No. GTX30648

Host	Rabbit
Clonality	Polyclonal
Isotype	IgG
Applications	WB, IHC-P, IHC-Fr, IP
Reactivity	Human

Package  
100 µl

## Applications

## Application Note

\*Optimal dilutions/concentrations should be determined by the researcher.

Suggested dilution	Recommended dilution
WB	1:1000
IHC-P	1:50 - 1:100
IHC-Fr	Assay dependent
IP	1:10 - 1:500

Not tested in other applications.

Calculated MW 26 kDa. ( [Note](#) )

## Properties

Form	Liquid
Buffer	Tris-Citrate/Phosphate
Preservative	0.1% Sodium azide
Storage	Store as concentrated solution. Centrifuge briefly prior to opening vial. Store at 4°C. DO NOT FREEZE.
Concentration	1 mg/ml (Please refer to the vial label for the specific concentration.)
Immunogen	A synthetic peptide made specifically to the humanDLX4 protein sequence (between residues 1-60) [UniProt# Q92988].
Purification	Purified by antigen-affinity chromatography
Conjugation	Unconjugated

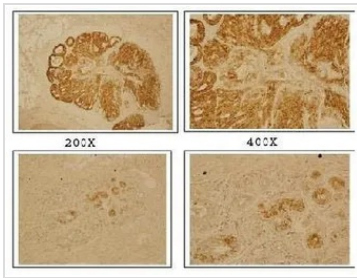
## Note

For laboratory research use only. Not for any clinical, therapeutic, or diagnostic use in humans or animals. Not for animal or human consumption.

Purchasers shall not, and agree not to enable third parties to, analyze, copy, reverse engineer or otherwise attempt to determine the structure or sequence of the product.

For full product information, images and publications, please visit our [website](#).

## DATA IMAGES

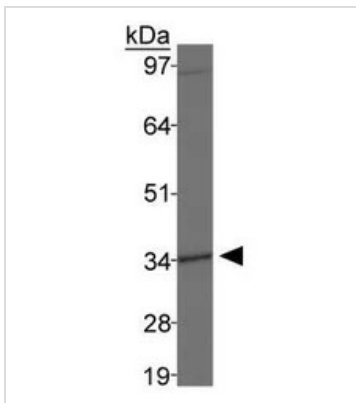


### GTX30648 IHC-Fr Image

IHC-Fr analysis of human breast carcinoma tissue using GTX30648 DLX4 antibody.

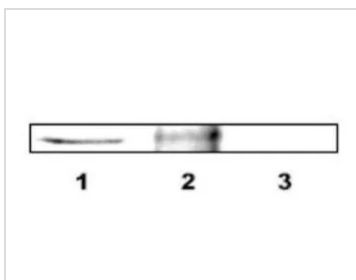
TOP : breast cancer tissue

Bottom : normal breast tissue



### GTX30648 WB Image

WB analysis of MDA-MB-231 cell lysate using GTX30648 DLX4 antibody.



### GTX30648 IP Image

IP analysis of cell lysate using GTX30648 DLX4 antibody.

Lane 1 : input

Lane 2 : IP by GTX30648

Lane 3 : Negative control

IP reaction : 1:1000 / 850µg of cell extract

Dilution : 1:5000



For full product information, images and publications, please visit our [website](https://www.genetex.com).