

NSP-5a3a antibody

Cat. No. GTX30651

Host	Rabbit
Clonality	Polyclonal
Isotype	IgG
Applications	WB, ICC/IF, IP
Reactivity	Human

Package
100 µl

Applications

Application Note

*Optimal dilutions/concentrations should be determined by the researcher.

Suggested dilution	Recommended dilution
WB	1:500 - 1:2000
ICC/IF	1:250
IP	Assay dependent

Not tested in other applications.

Calculated MW 119 kDa. ([Note](#))

Properties

Form	Liquid
Buffer	Tris-Citrate/Phosphate
Preservative	0.1% Sodium azide
Storage	Store as concentrated solution. Centrifuge briefly prior to opening vial. Store at 4°C. DO NOT FREEZE.
Concentration	1 mg/ml (Please refer to the vial label for the specific concentration.)
Immunogen	An internal synthetic peptide made to the human NSP 5 alpha 3 alpha protein sequence (between residues 1-100). [UniProt# Q5M775]
Purification	Purified by antigen-affinity chromatography
Conjugation	Unconjugated

Note

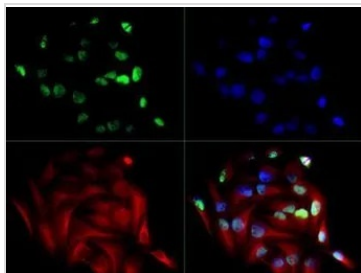
For laboratory research use only. Not for any clinical, therapeutic, or diagnostic use in humans or animals. Not for animal or human consumption.

Purchasers shall not, and agree not to enable third parties to, analyze, copy, reverse engineer or otherwise attempt to determine the structure or sequence of the product.



For full product information, images and publications, please visit our [website](#).

DATA IMAGES



GTx30651 ICC/IF Image

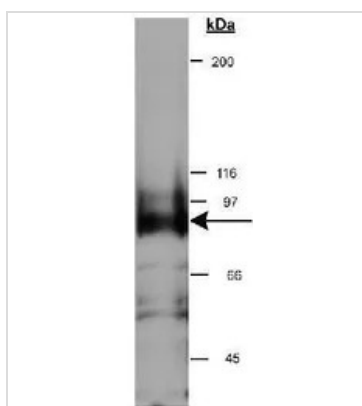
ICC/IF analysis of HeLa cells using GTx30651 NSP-5a3a antibody.

Green : primary antibody

Red : Tubulin

Blue : DAPI

Dilution : 1:250



GTx30651 WB Image

WB analysis of HeLa cell lysate (in RIPA buffer) using GTx30651 NSP-5a3a antibody.

Dilution : 0.5µg/ml



For full product information, images and publications, please visit our [website](#).