

## VEGF Receptor 1 antibody

**Cat. No. GTX30653**

<b>Host</b>	Rabbit
<b>Clonality</b>	Polyclonal
<b>Isotype</b>	IgG
<b>Applications</b>	WB, ICC/IF, IHC-P
<b>Reactivity</b>	Human, Mouse, Rat

**Package**  
100 µl

## Applications

**Application Note**

\*Optimal dilutions/concentrations should be determined by the researcher.

Suggested dilution	Recommended dilution
WB	1:100 - 1:2000
ICC/IF	1:500
IHC-P	1:250 - 1:500

Not tested in other applications.

**Calculated MW** 150 kDa. ([Note](#))**Product Note** This antibody targets VEGFR-1 but has significant cross-reactivity with the VEGFR-2 protein.

## Properties

<b>Form</b>	Liquid
<b>Buffer</b>	Tris-Glycine, 150mM NaCl
<b>Preservative</b>	0.05% Sodium azide
<b>Storage</b>	Store as concentrated solution. Centrifuge briefly prior to opening vial. Store at 4°C. DO NOT FREEZE.
<b>Concentration</b>	1 mg/ml (Please refer to the vial label for the specific concentration.)
<b>Immunogen</b>	A synthetic peptide made to an internal region of the mouse VEGF Receptor 1 protein (between residues 800-900) [UniProt# P35969]. There is 87% identity between the immunogen used for this production and the VEGF Receptor 2 protein.
<b>Purification</b>	Purified by antigen-affinity chromatography
<b>Conjugation</b>	Unconjugated



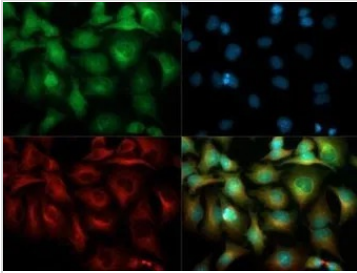
For full product information, images and publications, please visit our [website](#).

For laboratory research use only. Not for any clinical, therapeutic, or diagnostic use in humans or animals. Not for animal or human consumption.

## Note

Purchasers shall not, and agree not to enable third parties to, analyze, copy, reverse engineer or otherwise attempt to determine the structure or sequence of the product.

## DATA IMAGES



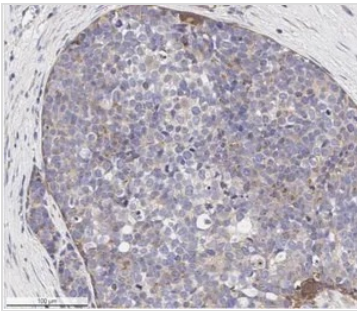
### GTx30653 ICC/IF Image

ICC/IF analysis of HeLa cells using GTx30653 VEGF Receptor 1 antibody.

Green : primary antibody

Red : Tubulin

Blue : DAPI

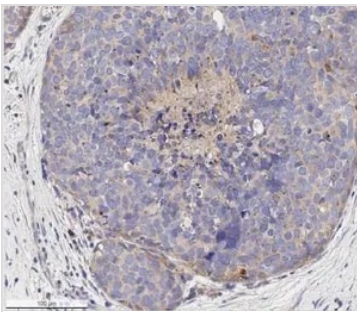


### GTx30653 IHC-P Image

IHC-P analysis of human breast carcinoma tissue using GTx30653 VEGF Receptor 1 antibody.

Dilution : 1:500

Antigen retrieval : Heat induced antigen retrieval (HIER) using 10mM sodium citrate buffer (pH 6.0)



### GTx30653 IHC-P Image

IHC-P analysis of human breast carcinoma tissue using GTx30653 VEGF Receptor 1 antibody.

Dilution : 1:500

Antigen retrieval : Heat induced antigen retrieval (HIER) using 10mM sodium citrate buffer (pH 6.0)



For full product information, images and publications, please visit our [website](#).