

MAP2 antibody

Cat. No. GTX30663

Host	Chicken
Clonality	Polyclonal
Isotype	IgY
Applications	WB, ICC/IF, IHC-Fr, IHC
Reactivity	Human, Mouse, Rat, Bovine

References (2)

Package

50 µl

Applications

Application Note

*Optimal dilutions/concentrations should be determined by the researcher.

Suggested dilution	Recommended dilution
WB	1:10000 - 1:20000
ICC/IF	1:5000 - 1:10000
IHC-Fr	1:1000 - 1:5000
IHC	1:1000 - 1:5000

Not tested in other applications.

Properties

Form	Liquid
Buffer	PBS
Preservative	5mM Sodium azide
Storage	Store as concentrated solution. Centrifuge briefly prior to opening vial. For short-term storage (1-2 weeks), store at 4°C. For long-term storage, aliquot and store at -20°C or below. Avoid multiple freeze-thaw cycles.
Concentration	Batch dependent (Please refer to the vial label for the specific concentration.)
Immunogen	Purified MAP2 isolated from bovine brain.
Purification	Ammonium sulfate precipitation
Conjugation	Unconjugated

Note

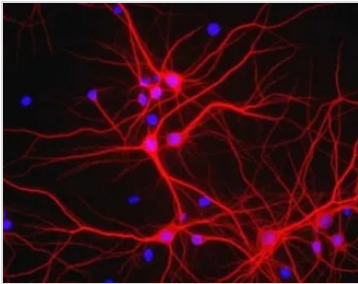
For laboratory research use only. Not for any clinical, therapeutic, or diagnostic use in humans or animals. Not for animal or human consumption.

Purchasers shall not, and agree not to enable third parties to, analyze, copy, reverse engineer or otherwise attempt to determine the structure or sequence of the product.



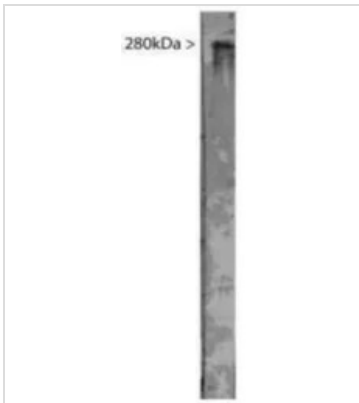
For full product information, images and publications, please visit our [website](#).

DATA IMAGES



GTX30663 ICC/IF Image

ICC/IF analysis of mixed neuron/glia cell cultures using GTX30663 MAP2 antibody. The perikarya and dendrites of neurons are strongly and specifically stained with the MAP2 antibody, while the axons of the neurons and the processes of all other cell types in these cultures (astrocytes, oligodendrocytes, microglia, endothelia and fibroblasts) are all negative.



GTX30663 WB Image

WB analysis of bovine brain tissue lysate using GTX30663 MAP2 antibody.



For full product information, images and publications, please visit our [website](#).