

## NF-H antibody

**Cat. No. GTX30665**

<b>Host</b>	Chicken
<b>Clonality</b>	Polyclonal
<b>Isotype</b>	IgY
<b>Applications</b>	WB, ICC/IF, IHC-P, IHC-Fr
<b>Reactivity</b>	Human, Mouse, Rat, Bovine, Cat, Pig

**Package**  
50 µl

## Applications

**Application Note**

\*Optimal dilutions/concentrations should be determined by the researcher.

Suggested dilution	Recommended dilution
WB	1:5000 - 1:10000
ICC/IF	1:1000 - 1:10000
IHC-P	1:1000 - 1:10000
IHC-Fr	1:1000 - 1:10000

Not tested in other applications.

## Properties

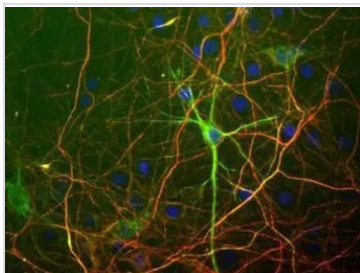
<b>Form</b>	Liquid
<b>Buffer</b>	PBS
<b>Preservative</b>	0.02% Sodium azide
<b>Storage</b>	Store as concentrated solution. Centrifuge briefly prior to opening vial. For short-term storage (1-2 weeks), store at 4°C. For long-term storage, aliquot and store at -20°C or below. Avoid multiple freeze-thaw cycles.
<b>Concentration</b>	Batch dependent (Please refer to the vial label for the specific concentration.)
<b>Immunogen</b>	Neurofilament Heavy protein purified from bovine spinal cord
<b>Purification</b>	Ammonium sulfate precipitation
<b>Conjugation</b>	Unconjugated

**Note** For laboratory research use only. Not for any clinical, therapeutic, or diagnostic use in humans or animals. Not for animal or human consumption.

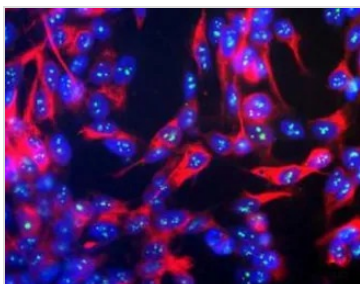
Purchasers shall not, and agree not to enable third parties to, analyze, copy, reverse engineer or otherwise attempt to determine the structure or sequence of the product.



For full product information, images and publications, please visit our [website](#).

**DATA IMAGES**

**GTX30665 ICC/IF Image**

ICC/IF analysis of mixed rat neuron/glia cell cultures using GTX30665 NF-H antibody (green) and Neurofilament Heavy (NF-H) antibody (red).

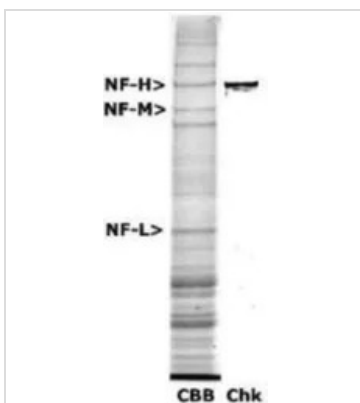

**GTX30665 ICC/IF Image**

ICC/IF analysis of SH-SY5Y cells using GTX30665 NF-H antibody.

Green : Fibrillarin

Red : primary antibody

Blue : DAPI


**GTX30665 WB Image**

WB analysis of rat spinal cord tissue lysate using GTX30665 NF-H antibody.

Lane 1 : Coomassie Brilliant Blue stained

Lane 2 : Primary antibody


**GTX30665 ICC/IF Image**

ICC/IF analysis of rat neuron cells using GTX30665 NF-H antibody.



For full product information, images and publications, please visit our [website](#).