

## Vimentin antibody

Cat. No. GTX30668

Host	Chicken
Clonality	Polyclonal
Isotype	IgY
Applications	WB, ICC/IF, IHC-P, IHC-Fr
Reactivity	Human, Mouse, Rat, Bovine, Dog, Chicken, Pig, Horse

References ( 1 )

Package

100 µl

## Applications

## Application Note

\*Optimal dilutions/concentrations should be determined by the researcher.

Suggested dilution	Recommended dilution
WB	1:10000
ICC/IF	1:5000
IHC-P	Assay dependent
IHC-Fr	Assay dependent

Not tested in other applications.

**Calculated MW** 54 kDa. ( [Note](#) )

## Properties

Form	Liquid
Buffer	PBS
Preservative	0.02% Sodium azide
Storage	Store as concentrated solution. Centrifuge briefly prior to opening vial. For short-term storage (1-2 weeks), store at 4°C. For long-term storage, aliquot and store at -20°C or below. Avoid multiple freeze-thaw cycles.
Concentration	Batch dependent (Please refer to the vial label for the specific concentration.)
Immunogen	Recombinant human Vimentin purified from E. coli. [Swiss-Prot# P08670]
Purification	Purified IgY
Conjugation	Unconjugated

## Note

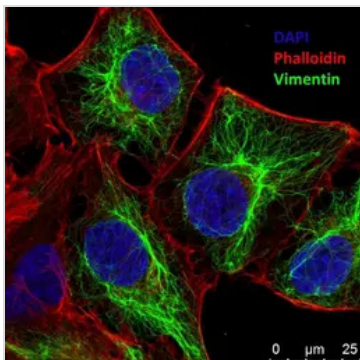
For laboratory research use only. Not for any clinical, therapeutic, or diagnostic use in humans or animals. Not for animal or human consumption.

Purchasers shall not, and agree not to enable third parties to, analyze, copy, reverse engineer or otherwise attempt to determine the structure or sequence of the product.



For full product information, images and publications, please visit our [website](#).

## DATA IMAGES

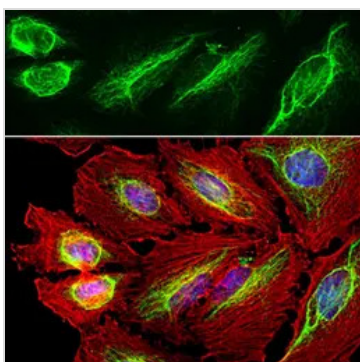


### GTx30668 ICC/IF Image

ICC/IF analysis of 10% formalin-fixed A7 cells using GTx30668 Vimentin antibody.

Permeabilization : 0.1% TritonX-100

Dilution : 1:600 at 4 oC overnight



### GTx30668 ICC/IF Image

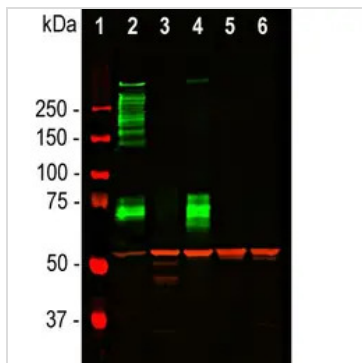
ICC/IF analysis of HeLa cells using GTx30668 Vimentin antibody.

Green : Primary antibody

Red : Actin

Blue : DAPI

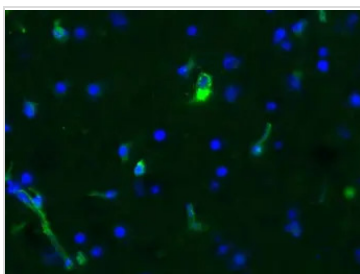
Dilution : 1:500



### GTx30668 WB Image

WB analysis of rat whole brain tissue (lane 2), HeLa (lane 3), SH-SY5Y (lane 4), HEK293 (lane 5), and NIH-3T3 (lane 6) cell lysates using GTx30668 Vimentin antibody (Red) and MAP2 antibody (Green). MAP2 isotypes are seen only in extracts containing neuronal lineage cells.

Dilution : 1:5000



### GTx30668 IHC-Fr Image

IHC-Fr analysis of 10 μm PFA fixed mouse brain acute slices using GTx30668 Vimentin antibody.

Dilution : 1:600



For full product information, images and publications, please visit our [website](https://www.genetex.com).