

Nestin antibody

Cat. No. GTX30670

Host	Rabbit
Clonality	Polyclonal
Isotype	IgG
Applications	WB, ICC/IF
Reactivity	Human, Dog

Package
100 µl

Applications

Application Note

*Optimal dilutions/concentrations should be determined by the researcher.

Suggested dilution	Recommended dilution
WB	1:500 - 1:2000
ICC/IF	1:100 - 1:500

Not tested in other applications.

Calculated MW 177 kDa. ([Note](#))

Product Note We do not recommend use of this product for Mouse,Rat,Rabbit samples.

Properties

Form	Liquid
Buffer	Tris-Citrate/Phosphate
Preservative	0.1% Sodium azide
Storage	Store as concentrated solution. Centrifuge briefly prior to opening vial. Store at 4°C. DO NOT FREEZE.
Concentration	1 mg/ml (Please refer to the vial label for the specific concentration.)
Immunogen	Recombinant human Nestin protein (corresponding to residues 1464-1614). [UniProt# P48681]
Purification	Purified by antigen-affinity chromatography
Conjugation	Unconjugated

Note

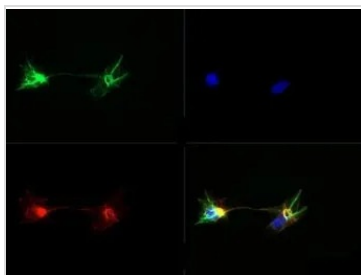
For laboratory research use only. Not for any clinical, therapeutic, or diagnostic use in humans or animals. Not for animal or human consumption.

Purchasers shall not, and agree not to enable third parties to, analyze, copy, reverse engineer or otherwise attempt to determine the structure or sequence of the product.



For full product information, images and publications, please visit our [website](#).

DATA IMAGES



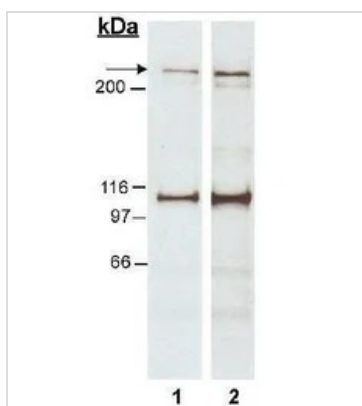
GTx30670 ICC/IF Image

ICC/IF analysis of NTERA-2 cells using GTx30670 Nestin antibody.

Green : primary antibody

Red : Tubulin

Blue : DAPI



GTx30670 WB Image

WB analysis of human fetal temporal lobe tissue lysate using GTx30670 Nestin antibody.

Lane 1 : 0.5 µg/ml

Lane 2 : 2 µg/ml

Dilution : 2 µg/ml

Loading : 30µg



For full product information, images and publications, please visit our [website](#).