

## Nestin antibody [10C2]

Cat. No. GTX30671

<b>Host</b>	Mouse
<b>Clonality</b>	Monoclonal
<b>Isotype</b>	IgG1
<b>Applications</b>	WB, ICC/IF, IHC-P, IHC-Fr, FCM, MS
<b>Reactivity</b>	Human, Mouse, Hamster

References ( 7 )

Package

100 µl

## Applications

## Application Note

\*Optimal dilutions/concentrations should be determined by the researcher.

Suggested dilution	Recommended dilution
WB	1:1000 - 1:5000
ICC/IF	1:50 - 1:200
IHC-P	1:100 - 1:200
IHC-Fr	1:100 - 1:200
FCM	1 µg / 10 <sup>6</sup> cells
MS	Assay dependent

Not tested in other applications.

**Calculated MW** 177 kDa. ( [Note](#) )**Product Note** We do not recommend use of this product for Rat,Rabbit samples.

## Properties

<b>Form</b>	Liquid
<b>Buffer</b>	PBS
<b>Preservative</b>	0.1% Sodium azide
<b>Storage</b>	Store as concentrated solution. Centrifuge briefly prior to opening vial. For short-term storage (1-2 weeks), store at 4°C. For long-term storage, aliquot and store at -20°C or below. Avoid multiple freeze-thaw cycles.
<b>Concentration</b>	2.4 mg/ml (Please refer to the vial label for the specific concentration.)
<b>Immunogen</b>	A fragment of the human Nestin protein corresponding to residues 1464-1614. [UniProt P48681]
<b>Purification</b>	Protein G purified
<b>Conjugation</b>	Unconjugated

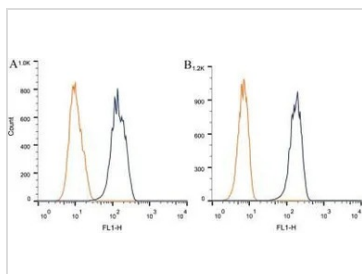


For full product information, images and publications, please visit our [website](#).

For laboratory research use only. Not for any clinical, therapeutic, or diagnostic use in humans or animals. Not for animal or human consumption.

**Note**

Purchasers shall not, and agree not to enable third parties to, analyze, copy, reverse engineer or otherwise attempt to determine the structure or sequence of the product.

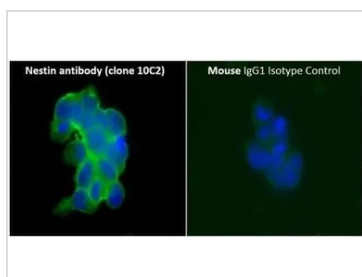
**DATA IMAGES**

**GTX30671 FCM Image**

FACS (Intracellular staining) analysis of  $1 \times 10^6$  CHO (A) and HEK293 (B) cells using GTX30671 Nestin antibody [10C2].

Blue : Primary antibody

Orange : isotype control

Dilution :  $1 \mu\text{g}/10^6$  cells


**GTX30671 ICC/IF Image**

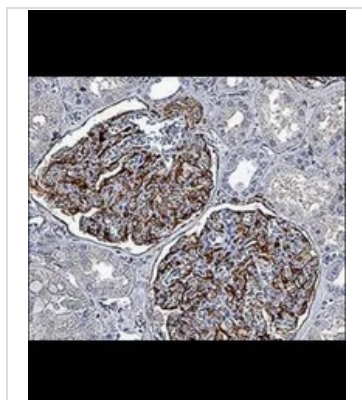
ICC/IF analysis of F9 cells using GTX30671 Nestin antibody [10C2].

Green : primary antibody(left) and isotype control(right)

Blue : DAPI

Dilution : 1:50

Permibilization : 0.1% Triton X-100


**GTX30671 IHC-P Image**

IHC-P analysis of human kidney tissue using GTX30671 Nestin antibody [10C2].

Dilution : 1:500



For full product information, images and publications, please visit our [website](https://www.genetex.com).