

Huntingtin (neoepitope 552) antibody [4-13]

Cat. No. GTX30673

Host	Mouse
Clonality	Monoclonal
Isotype	IgG
Applications	WB, ICC/IF, IHC
Reactivity	Human, Mouse

Package
100 µg

Applications

Application Note

*Optimal dilutions/concentrations should be determined by the researcher.

Suggested dilution	Recommended dilution
WB	1:500 - 1:1000
ICC/IF	2.5 µg/ml
IHC	2.5 µg/ml

Not tested in other applications.

Calculated MW	348 kDa. (Note)
Product Note	This antibody recognizes the 552 cleaved fragment without detecting the full-length form.

Properties

Form	Liquid
Buffer	PBS, 0.1% BSA
Preservative	0.05% Sodium azide
Storage	Store as concentrated solution. Centrifuge briefly prior to opening vial. For short-term storage (1-2 weeks), store at 4°C. For long-term storage, aliquot and store at -20°C or below. Avoid multiple freeze-thaw cycles.
Concentration	1 mg/ml (Please refer to the vial label for the specific concentration.)
Immunogen	Synthetic peptide conjugated to KLH via cysteine corresponding to residues CSDPAMDLDND (544-552) of Human HTT.
Purification	Purified by affinity chromatography
Conjugation	Unconjugated

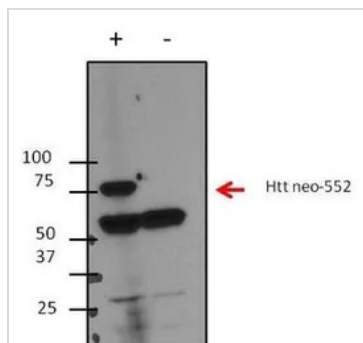
For full product information, images and publications, please visit our [website](#).

For laboratory research use only. Not for any clinical, therapeutic, or diagnostic use in humans or animals. Not for animal or human consumption.

Note

Purchasers shall not, and agree not to enable third parties to, analyze, copy, reverse engineer or otherwise attempt to determine the structure or sequence of the product.

DATA IMAGES



GTX30673 WB Image

WB analysis of over-expressed recombinant HTT fragment lysates (Lane 1) or transfected vector only control lysate (Lane 2) using GTX30673 Huntingtin (neoepitope 552) antibody [4-13].

Dilution : 1:500

Loading: 20 µg



For full product information, images and publications, please visit our [website](#).