

## NPC1L1 antibody

Cat. No. GTX30675

<b>Host</b>	Rabbit
<b>Clonality</b>	Polyclonal
<b>Isotype</b>	IgG
<b>Applications</b>	WB, IHC-P, IP
<b>Reactivity</b>	Human, Mouse, Rat

**Package**  
100 µl

## Applications

## Application Note

\*Optimal dilutions/concentrations should be determined by the researcher.

Suggested dilution	Recommended dilution
WB	1:500
IHC-P	1:50 - 1:100
IP	Assay dependent

Not tested in other applications.

**Calculated MW** 146 kDa. ([Note](#))

## Properties

<b>Form</b>	Liquid
<b>Buffer</b>	PBS
<b>Preservative</b>	0.02% Sodium azide
<b>Storage</b>	Store as concentrated solution. Centrifuge briefly prior to opening vial. For short-term storage (1-2 weeks), store at 4°C. For long-term storage, aliquot and store at -20°C or below. Avoid multiple freeze-thaw cycles.
<b>Concentration</b>	1 mg/ml (Please refer to the vial label for the specific concentration.)
<b>Immunogen</b>	A synthetic peptide made to an internal region of rat Niemann-Pick type C1 Like-1 (between residues 500-600). [UniProt# Q6T3U3]
<b>Purification</b>	Purified by antigen-affinity chromatography
<b>Conjugation</b>	Unconjugated

## Note

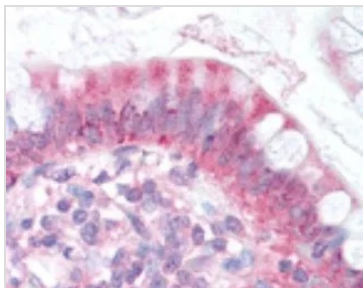
For laboratory research use only. Not for any clinical, therapeutic, or diagnostic use in humans or animals. Not for animal or human consumption.

Purchasers shall not, and agree not to enable third parties to, analyze, copy, reverse engineer or otherwise attempt to determine the structure or sequence of the product.



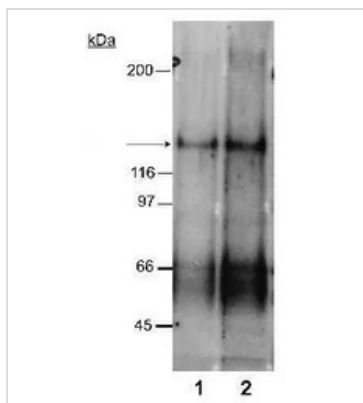
For full product information, images and publications, please visit our [website](#).

## DATA IMAGES



### GTX30675 IHC-P Image

IHC-P analysis of human small intestine tissue using GTX30675 NPC1L1 antibody.



### GTX30675 WB Image

WB analysis of rat small intestine membrane extract using GTX30675 NPC1L1 antibody.

Lane 1 : 2µg/ml

Lane 2 : 4µg/ml

Loading : 20µg



For full product information, images and publications, please visit our [website](https://www.genetex.com).