

LIMP II antibody

Cat. No. GTX30676

| | |
|---------------------|---------------------------------|
| Host | Rabbit |
| Clonality | Polyclonal |
| Isotype | IgG |
| Applications | WB, ICC/IF, IHC-P, IP |
| Reactivity | Human, Mouse, Rat, Dog, Primate |

References (1)
 Package
 100 µl

Applications

Application Note

*Optimal dilutions/concentrations should be determined by the researcher.

| Suggested dilution | Recommended dilution |
|--------------------|----------------------|
| WB | 1:1000 |
| ICC/IF | 1:50 - 1:250 |
| IHC-P | Assay dependent |
| IP | 1:100 |

Not tested in other applications.

Calculated MW 54 kDa. ([Note](#))

Properties

| | |
|---------------------|--|
| Form | Liquid |
| Buffer | Serum |
| Preservative | 0.05% Sodium azide |
| Storage | Store as concentrated solution. Centrifuge briefly prior to opening vial. For short-term storage (1-2 weeks), store at 4°C. For long-term storage, aliquot and store at -20°C or below. Avoid multiple freeze-thaw cycles. |
| Immunogen | A C-terminal synthetic peptide made to the mouse LIMPII/Igp85 protein sequence. [UniProt# O35114] |
| Purification | Unpurified |
| Conjugation | Unconjugated |

Note

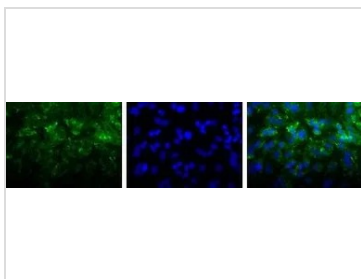
For laboratory research use only. Not for any clinical, therapeutic, or diagnostic use in humans or animals. Not for animal or human consumption.

Purchasers shall not, and agree not to enable third parties to, analyze, copy, reverse engineer or otherwise attempt to determine the structure or sequence of the product.



For full product information, images and publications, please visit our [website](#).

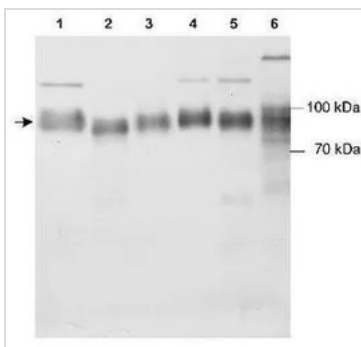
DATA IMAGES

**GTX30676 ICC/IF Image**

ICC/IF analysis of HeLa cells using GTX30676 LIMP II antibody.

Green : primary antibody

Blue : Hoechst 33258

**GTX30676 WB Image**

WB analysis of multiple samples using GTX30676 LIMP II antibody.

Lane 1 : Rat cardiac fibroblasts (RCF)

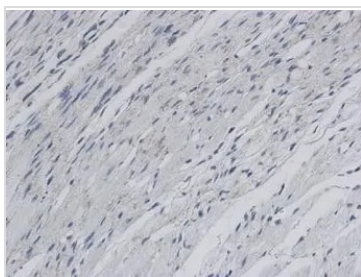
Lane 2 : 3T3 cells

Lane 3 : dog lung lysate

Lane 4 : RCF treated with angiotensin II

Lane 5 : RCF treated with H₂O₂

Lane 6 : HEPG2 human liver lysate

**GTX30676 IHC-P Image**

IHC-P analysis of rat infarctzone tissue using GTX30676 LIMP II antibody.



For full product information, images and publications, please visit our [website](#).