

ChREBP antibody

Cat. No. GTX30677

Host	Rabbit
Clonality	Polyclonal
Isotype	IgG
Applications	WB, ICC/IF, IHC-P, IP, ChIP assay
Reactivity	Human, Mouse, Rat

References (2)

Package

100 µl

Applications

Application Note

*Optimal dilutions/concentrations should be determined by the researcher.

Suggested dilution	Recommended dilution
WB	1:1000
ICC/IF	1:100 - 1:500
IHC-P	1:100
IP	1:10 - 1:500
ChIP assay	1:10 - 1:500

Not tested in other applications.

Calculated MW 93 kDa. ([Note](#))

Properties

Form	Liquid
Buffer	PBS
Preservative	0.02% Sodium azide
Storage	Store as concentrated solution. Centrifuge briefly prior to opening vial. For short-term storage (1-2 weeks), store at 4°C. For long-term storage, aliquot and store at -20°C or below. Avoid multiple freeze-thaw cycles.
Concentration	1 mg/ml (Please refer to the vial label for the specific concentration.)
Immunogen	A C-terminal synthetic peptide made to the human CHREBP protein sequence (between residues 800-852). [UniProt# Q9NP71, Isoform 1/Alpha]
Purification	Purified by antigen-affinity chromatography
Conjugation	Unconjugated



For full product information, images and publications, please visit our [website](#).

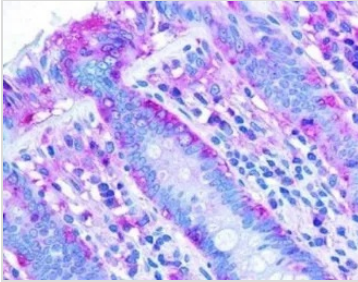
Date 2025 / 05 / 06 Page 1 of 2

For laboratory research use only. Not for any clinical, therapeutic, or diagnostic use in humans or animals. Not for animal or human consumption.

Note

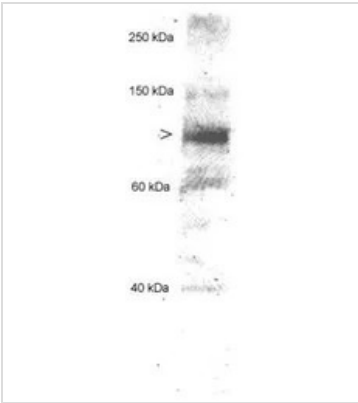
Purchasers shall not, and agree not to enable third parties to, analyze, copy, reverse engineer or otherwise attempt to determine the structure or sequence of the product.

DATA IMAGES



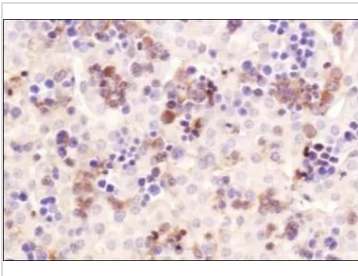
GTX30677 IHC-P Image

IHC-P analysis of human colon tissue using GTX30677 ChREBP antibody.



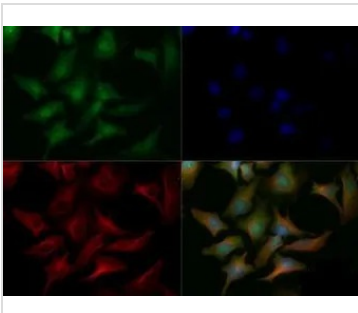
GTX30677 WB Image

WB analysis of human hepatocyte lysate using GTX30677 ChREBP antibody.
Loading : 20µg



GTX30677 IHC-P Image

IHC-P analysis of mouse liver tissue using GTX30677 ChREBP antibody.



GTX30677 ICC/IF Image

ICC/IF analysis of HeLa cells using GTX30677 ChREBP antibody.

Green : primary antibody

Red : Tubulin

Blue : DAPI

Dilution : 1:200

Fixation : 10% formalin

Permibilization : 0.5% Triton-X100



For full product information, images and publications, please visit our [website](#).