

ChREBP antibody

Cat. No. GTX30679

Host	Rabbit
Clonality	Polyclonal
Isotype	IgG
Applications	WB, ICC/IF
Reactivity	Human, Mouse

Package
100 µl

Applications

Application Note

*Optimal dilutions/concentrations should be determined by the researcher.

Suggested dilution	Recommended dilution
WB	Assay dependent
ICC/IF	1:100

Not tested in other applications.

Calculated MW 93 kDa. ([Note](#))

Properties

Form	Liquid
Buffer	Tris-Citrate/Phosphate
Preservative	0.01% Sodium azide
Storage	Store as concentrated solution. Centrifuge briefly prior to opening vial. Store at 4°C. DO NOT FREEZE.
Concentration	1 mg/ml (Please refer to the vial label for the specific concentration.)
Immunogen	An internal synthetic peptide made to the human CHREBP protein sequence (between residues 50-150). [UniProt# Q9NP71, Isoform 1/Alpha]
Purification	Purified by antigen-affinity chromatography
Conjugation	Unconjugated

Note

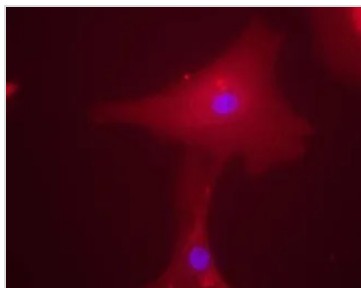
For laboratory research use only. Not for any clinical, therapeutic, or diagnostic use in humans or animals. Not for animal or human consumption.

Purchasers shall not, and agree not to enable third parties to, analyze, copy, reverse engineer or otherwise attempt to determine the structure or sequence of the product.



For full product information, images and publications, please visit our [website](#).

DATA IMAGES



GTX30679 ICC/IF Image

ICC/IF analysis of human hepatocyte using GTX30679 ChREBP antibody.

Red : primary antibody

Blue : DAPI



For full product information, images and publications, please visit our [website](#).