

NuMA antibody

Cat. No. GTX30688

Host	Rabbit
Clonality	Polyclonal
Isotype	IgG
Applications	WB, ICC/IF, IHC-P, IHC-Fr, IP
Reactivity	Human, Mouse, Rat, Monkey, Primate

Package
 100 µl

Applications

Application Note

*Optimal dilutions/concentrations should be determined by the researcher.

Suggested dilution	Recommended dilution
WB	1:1000
ICC/IF	1:500
IHC-P	5 µg/ml
IHC-Fr	Assay dependent
IP	1:10 - 1:500

Not tested in other applications.

Calculated MW 238 kDa. ([Note](#))

Properties

Form	Liquid
Buffer	Serum
Preservative	0.02% Sodium azide
Storage	Store as concentrated solution. Centrifuge briefly prior to opening vial. For short-term storage (1-2 weeks), store at 4°C. For long-term storage, aliquot and store at -20°C or below. Avoid multiple freeze-thaw cycles.
Immunogen	Full-length recombinant human NuMA expressed in insect Sf9 cells using baculovirus expression system, then purified to near homogeneity prior to immunization.
Purification	Unpurified
Conjugation	Unconjugated



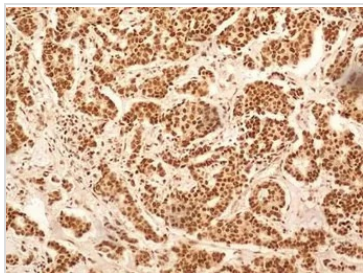
For full product information, images and publications, please visit our [website](#).

For laboratory research use only. Not for any clinical, therapeutic, or diagnostic use in humans or animals. Not for animal or human consumption.

Note

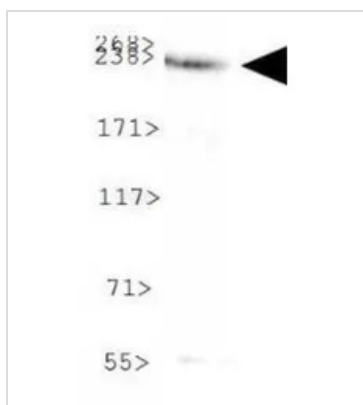
Purchasers shall not, and agree not to enable third parties to, analyze, copy, reverse engineer or otherwise attempt to determine the structure or sequence of the product.

DATA IMAGES

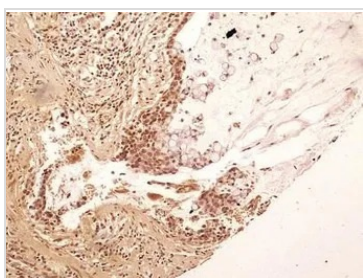
**GTX30688 IHC-P Image**

IHC-P analysis of human breast cancer tissue using GTX30688 NuMA antibody.

Dilution : 5 µg/ml

**GTX30688 WB Image**

WB analysis of COS-7 cell lysate using GTX30688 NuMA antibody.

**GTX30688 IHC-P Image**

IHC-P analysis of human stomach adenocarcinoma tissue using GTX30688 NuMA antibody.

Dilution : 5 µg/ml

**GTX30688 IHC-P Image**

IHC-P analysis of human skin tissue using GTX30688 NuMA antibody.

Dilution : 5 µg/ml



For full product information, images and publications, please visit our [website](#).