

## TPX2 antibody

Cat. No. GTX30690

Host	Rabbit
Clonality	Polyclonal
Isotype	IgG
Applications	WB, ICC/IF, FCM, IP
Reactivity	Human, Mouse, Rat, Pig

References ( 1 )

Package

100 µl

## Applications

## Application Note

\*Optimal dilutions/concentrations should be determined by the researcher.

Suggested dilution	Recommended dilution
WB	1:1000
ICC/IF	1:1000
FCM	Assay dependent
IP	1:10 - 1:100

Not tested in other applications.

Calculated MW 86 kDa. ( [Note](#) )

## Properties

Form	Liquid
Buffer	Serum
Preservative	No preservative
Storage	Store as concentrated solution. Centrifuge briefly prior to opening vial. For short-term storage (1-2 weeks), store at 4°C. For long-term storage, aliquot and store at -20°C or below. Avoid multiple freeze-thaw cycles.
Immunogen	A recombinant segment of the C-terminal domain of human TPX2 [UniProt# Q9ULW0]
Purification	Unpurified
Conjugation	Unconjugated

## Note

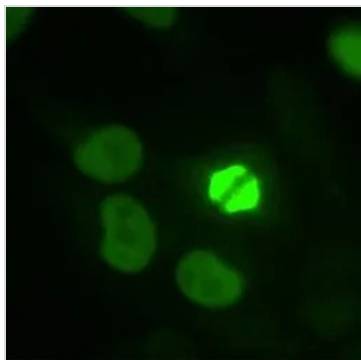
For laboratory research use only. Not for any clinical, therapeutic, or diagnostic use in humans or animals. Not for animal or human consumption.

Purchasers shall not, and agree not to enable third parties to, analyze, copy, reverse engineer or otherwise attempt to determine the structure or sequence of the product.



For full product information, images and publications, please visit our [website](#).

## DATA IMAGES

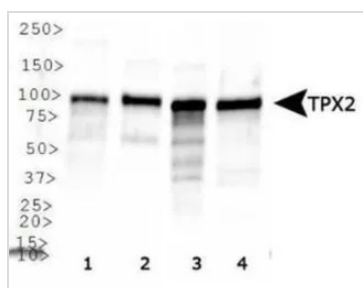


### GTX30690 ICC/IF Image

ICC/IF analysis of HeLa cells using GTX30690 TPX2 antibody. Nuclear staining during interphase and spindle staining during mitosis.

Dilution : 1:1000

Fixation : 3.5% PFA



### GTX30690 WB Image

WB analysis of (1) HeLa, (2) NTERA-2, (3) K562 and (4) Raji cell lysate using GTX30690 TPX2 antibody.



For full product information, images and publications, please visit our [website](#).