

KIF2A antibody

Cat. No. GTX30691

Host	Rabbit
Clonality	Polyclonal
Isotype	IgG
Applications	WB, ICC/IF, IP
Reactivity	Human, Mouse, Rat, Pig

Package
100 µl

Applications

Application Note

*Optimal dilutions/concentrations should be determined by the researcher.

Suggested dilution	Recommended dilution
WB	1:10000
ICC/IF	1:10000
IP	1:10 - 1:500

Not tested in other applications.

Calculated MW 80 kDa. ([Note](#))

Properties

Form	Liquid
Buffer	Serum
Preservative	No preservatives
Storage	Store as concentrated solution. Centrifuge briefly prior to opening vial. For short-term storage (1-2 weeks), store at 4°C. For long-term storage, aliquot and store at -20°C or below. Avoid multiple freeze-thaw cycles.
Immunogen	A recombinant segment of the N-terminal domain of human Kif2a. [UniProt# O00139]
Purification	Unpurified
Conjugation	Unconjugated

Note

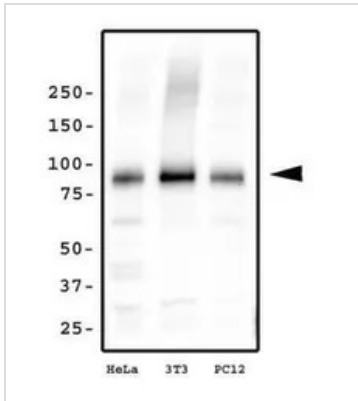
For laboratory research use only. Not for any clinical, therapeutic, or diagnostic use in humans or animals. Not for animal or human consumption.

Purchasers shall not, and agree not to enable third parties to, analyze, copy, reverse engineer or otherwise attempt to determine the structure or sequence of the product.



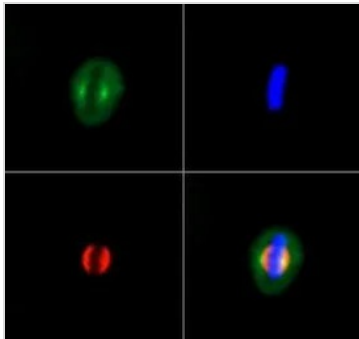
For full product information, images and publications, please visit our [website](#).

DATA IMAGES



GTX30691 WB Image

WB analysis of HeLa, NIH-3T3 and, PC12 cell lysate using GTX30691 KIF2A antibody.



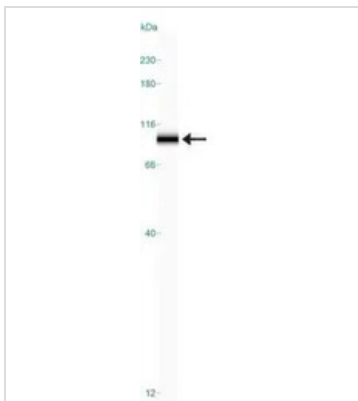
GTX30691 ICC/IF Image

ICC/IF analysis of HeLa cells using GTX30691 KIF2A antibody.

Green : primary antibody

Red : Tubulin

Blue : DAPI



GTX30691 WB Image

WB analysis of HeLa cell lysate using GTX30691 KIF2A antibody.



For full product information, images and publications, please visit our [website](https://www.genetex.com).