

Eg5 antibody

Cat. No. GTX30692

Host	Rabbit
Clonality	Polyclonal
Isotype	IgG
Applications	WB, ICC/IF, IP, IHC
Reactivity	Human, Mouse, Rat, Drosophila, Pig, Primate

References (2)

Package

100 µl

Applications

Application Note

*Optimal dilutions/concentrations should be determined by the researcher.

Suggested dilution	Recommended dilution
WB	1:1000
ICC/IF	1:1000
IP	1:10 - 1:500
IHC	Assay dependent

Not tested in other applications.

Calculated MW 119 kDa. ([Note](#))

Properties

Form	Liquid
Buffer	Serum
Preservative	No preservatives
Storage	Store as concentrated solution. Centrifuge briefly prior to opening vial. For short-term storage (1-2 weeks), store at 4°C. For long-term storage, aliquot and store at -20°C or below. Avoid multiple freeze-thaw cycles.
Immunogen	A recombinant segment of the coiled-coil domain of human Eg5 [UniProt# P52732]
Purification	Unpurified
Conjugation	Unconjugated

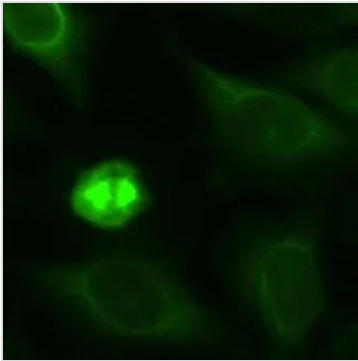
Note

For laboratory research use only. Not for any clinical, therapeutic, or diagnostic use in humans or animals. Not for animal or human consumption.

Purchasers shall not, and agree not to enable third parties to, analyze, copy, reverse engineer or otherwise attempt to determine the structure or sequence of the product.

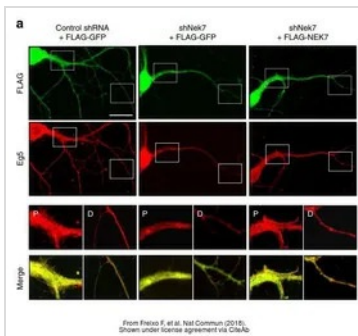
For full product information, images and publications, please visit our [website](#).

DATA IMAGES

**GTX30692 ICC/IF Image**

ICC/IF analysis of HeLa cells using GTX30692 Eg5 antibody. Cytoplasmic staining during interphase and spindle staining during mitosis.

Fixation : 3.5% PFA

**GTX30692 IHC Image**

The data was published in the journal Nat Commun in 2018. [PMID: 29899413](https://pubmed.ncbi.nlm.nih.gov/29899413/)



For full product information, images and publications, please visit our [website](#).