

FOXP3 antibody

Cat. No. GTX30696

Host	Rabbit
Clonality	Polyclonal
Isotype	IgG
Applications	WB, IHC-P, IHC-Fr, IHC
Reactivity	Human, Mouse

References (1)

Package

100 µl

Applications

Application Note

*Optimal dilutions/concentrations should be determined by the researcher.

Suggested dilution	Recommended dilution
WB	1:1000 - 1:5000
IHC-P	1:200 - 1:1000
IHC-Fr	1:50
IHC	1:50 - 1:1000

Note : The use of GTX30696 for mouse is based on IHC testing. For WB using mouse samples, we recommend GTX107737.

Not tested in other applications.

Calculated MW 47 kDa. ([Note](#))

Properties

Form	Liquid
Buffer	PBS
Preservative	0.02% Sodium azide
Storage	Store as concentrated solution. Centrifuge briefly prior to opening vial. For short-term storage (1-2 weeks), store at 4°C. For long-term storage, aliquot and store at -20°C or below. Avoid multiple freeze-thaw cycles.
Concentration	1 mg/ml (Please refer to the vial label for the specific concentration.)
Immunogen	A synthetic peptide made to the C-terminal region of human FOXP3 (between residues 400-431). [UniProt# Q9BZS1]
Purification	Purified by antigen-affinity chromatography
Conjugation	Unconjugated

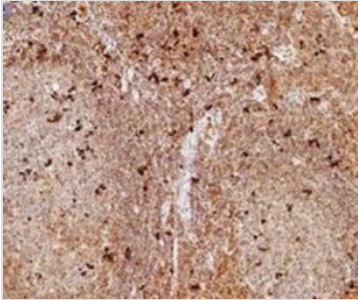


For full product information, images and publications, please visit our [website](#).

For laboratory research use only. Not for any clinical, therapeutic, or diagnostic use in humans or animals. Not for animal or human consumption.

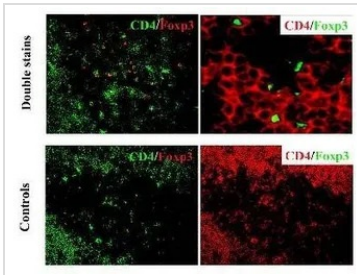
Note

Purchasers shall not, and agree not to enable third parties to, analyze, copy, reverse engineer or otherwise attempt to determine the structure or sequence of the product.

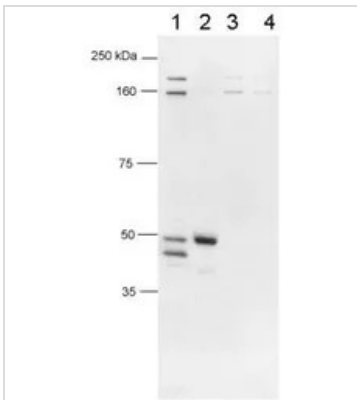
DATA IMAGES

GTX30696 IHC-P Image

IHC-P analysis of human tonsil tissue using GTX30696 FOXP3 antibody.

Dilution : 1:100


GTX30696 IHC Image

IHC analysis of mouse thymus tissue using GTX30696 FOXP3 antibody and CD4 antibody(Double stains) or CD4 antibody only(Controls).


GTX30696 WB Image

WB analysis of multiple samples using GTX30696 FOXP3 antibody.

Lane 1 : Human CD4+/CD25+ PBL cell

Lane 2 : 293 overexpressing human FOXP3 <

Lane 3 : 293 overexpressing mouse FOXP3

Lane 4 : 293 mock



For full product information, images and publications, please visit our [website](#).