

FOXP3 antibody

Cat. No. GTX30697

Host	Rabbit
Clonality	Polyclonal
Isotype	IgG
Applications	WB, IHC-P, IHC-Fr
Reactivity	Human, Mouse

Package
100 µl

Applications

Application Note

*Optimal dilutions/concentrations should be determined by the researcher.

Suggested dilution	Recommended dilution
WB	1:1000 - 1:5000
IHC-P	Assay dependent
IHC-Fr	1:150

Not tested in other applications.

Calculated MW 47 kDa. ([Note](#))

Properties

Form	Liquid
Buffer	Tris-Citrate/Phosphate
Preservative	0.1% Sodium azide
Storage	Store as concentrated solution. Centrifuge briefly prior to opening vial. Store at 4°C. DO NOT FREEZE.
Concentration	1 mg/ml (Please refer to the vial label for the specific concentration.)
Immunogen	A synthetic peptide made to the N-terminal region of human FOXP3 (between residues 1-50). [UniProt# Q9BZS1]
Purification	Purified by antigen-affinity chromatography
Conjugation	Unconjugated

Note

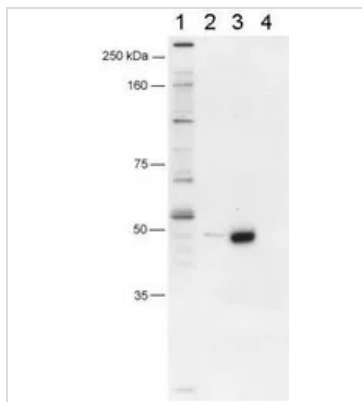
For laboratory research use only. Not for any clinical, therapeutic, or diagnostic use in humans or animals. Not for animal or human consumption.

Purchasers shall not, and agree not to enable third parties to, analyze, copy, reverse engineer or otherwise attempt to determine the structure or sequence of the product.



For full product information, images and publications, please visit our [website](#).

DATA IMAGES



GTX30697 WB Image

WB analysis of multiple samples using GTX30697 FOXP3 antibody.

Lane 1 : Human CD4+/CD25+ PBL cell

Lane 2 : 293 overexpressing human FOXP3 <

Lane 3 : 293 overexpressing mouse FOXP3

Lane 4 : 293 mock



For full product information, images and publications, please visit our [website](#).