

Streptomycin control peptide

Cat. No. GTX30733

Applications

ELISA, IHC

Package

200 µl

Applications

Application Note

For ELISA: Use at a dilution of 1:1500 as a control peptide for Streptomycin [1.BB.944] antibody (GTX15071). Optimal dilutions/concentrations should be determined by the end user.

Properties

Form Liquid

Buffer PBS

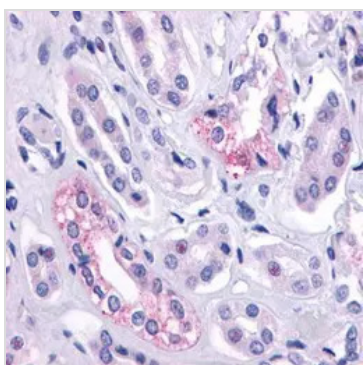
Preservative 0.05% Sodium azide

Storage Keep as concentrated solution. Store at 4°C short term. For extended storage aliquot and store at -20°C or below. Avoid freeze-thaw cycles.

Note For laboratory research use only. Not for any clinical, therapeutic, or diagnostic use in humans or animals. Not for animal or human consumption.

Purchasers shall not, and agree not to enable third parties to, analyze, copy, reverse engineer or otherwise attempt to determine the structure or sequence of the product.

DATA IMAGES



GTX30733 IHC Image



For full product information, images and publications, please visit our [website](#).